



On-line PICASSO PROJECT

**Comprehensive Catalogue Raisonné
Prof. Dr. Enrique Mallen**

1895



Tête et épaule de Don José couché. A Coruña. 1-January/1895 [1900]. Graphite pencil on greenish paper, with two strokes of white paint. 12,5 x 19 cm. Museu Picasso, Barcelona. Carnet A Coruña 2. Dation 1970.

OPP.95:006; MPB:111.503; P.I:45; PP.95:002; JR.91:49p; MG.15:283p; NM.95:10p; WO.92:14p

Le billet de loterie. A Coruña. [December/1894~] Early-1895. Pen on paper. 27,4 x 19,9 cm. Museu Picasso, Barcelona. Donation 1970.

OPP.95:116; C:27; MPB:110.377; PP.95:052; MG.15:221p; PJ.02*:45; TK.02*:n/a; TO.97*:6





Portrait du père de l'artiste (José Ruiz Blasco). A Coruña. [January~August]/1895. Oil on canvas. 52 x 32 cm. Musée Picasso, Paris. Dation Maya Ruiz-Picasso, 2021.

OPP.95:005; MPP:2021.2; P.I:84; PP.95:006; Z.XXI:32; EV.10:35p; GP.96:40p; MG.15*:112; WR.96:227p

Clipper, le chien de Picasso. A Coruña. [January~August]/1895. Oil on canvas. 21,7 x 33 cm. Museu Picasso, Barcelona. Donation 1970.

OPP.95:010; C:74; MPB:110.083; P.I:71; PP.95:031; BF.14:47p; JR.91:54p; MG.15*:39; NM.06:12p; PJ.02*:34





Paysage. A Coruña. [January~August]/1895. Oil on paper. 12,8 x 19 cm. Museu Picasso, Barcelona. Donation 1970.

OPP.95:011; C:76; MPB:110.109; P.I:73;
PP.95:042; MG.15*:87; PJ.02*:28; TO.95b:11p

Vieil homme de Galice. A Coruña.
[January~August]/1895. Oil on canvas. 58,5 x 42,8 cm.
Museu Picasso, Barcelona.

OPP.95:013; MPB:110.014; P.I:54; PP.95:015;
Z.XXI:41; AB.08*:n/a; AP.89:14p; AP.97:14p; BS.55:3;
CK.10*:n/a; GP.96:36p; JG.84*:8; MG.15:225p;
PJ.02*:35; PL.89:1; TK.02*:n/a





Le domestique de la Corogne. A Coruña. [January~August]/1895. Oil on canvas. [47,5] 48 x 37 cm. Marina Picasso Collection. (Inv 12028). Courtesy Galerie Jan Krugier, Geneva..

OPP.95:016; P.I:66; PP.95:017; Z.XXI:30; GC.96:40p; GP.96:38p; MG.15:337p; MP.81*:3

Portrait de Don José assis tenant en main palette et brosses. A Coruña. [January~August]/1895. Pencil on paper. 19 x 12,5 cm. Museu Picasso, Barcelona. Carnet A Coruña 2. Dation 1970.

OPP.95:017; MPB:111.508; P.I:47; PP.95:004; GP.96:35p; JR.91:40p





Portrait de Don José assis tenant en main palette et brosses.
A Coruña. [January~August]/1895. Pencil on paper. 19,5 x 13,5 cm.
Museu Picasso, Barcelona. Carnet A Coruña 2. Dation 1970.

OPP.95:018; MPB:112.482; P.I:49; PP.95:005; GP.96:35p;
MG.15*:111

Portrait d'homme. [A Coruña]. [January~August/1895]
[1896]. Oil on canvas. 50 x 32 cm. Fundación Almine &
Bernard Ruiz-Picasso para el Arte.

OPP.95:039; PP.96:127; Z.VI:22; GS.03:1.3; MG.15*:157;
PJ.02*:40; SL.04*:n/a





Paysage: Santa Margarita. A Coruña.
[January~August]/1895. Oil on wood board. [9,7 x 17,3] 10 x 17,5 cm. Fundación Almine & Bernard Ruiz-Picasso para el Arte.

OPP.95:040; P.I:51; PP.95:043; Z.VI:38;
GS.03:1.4; MG.15*:102; PJ.02*:26; TO.94:47p;
TO.95b:33

'Azul y Blanco': soldats et dindon. A Coruña. [September/1894] 9-January/1895. Pen & India ink on paper. 21 x 26 cm. The Picasso Estate.

OPP.95:085; P.I:132; PP.95:262;
Z.XXI:16; AB.00*:12; BA.18:47p;
MG.15*:132; NS.01:187





'Azul y Blanco': le Christ bénissant le diable.
A Coruña. [25-December~] 9-January/1895. India
ink. 21 x 26 cm. Fundación Almine & Bernard Ruiz-
Picasso para el Arte.

OPP.95:086; P.I:133; PP.95:261; Z.XXI:15;
AB.00*:13; CR.84:131p; MA.23c:74p;
MG.15*:133; NS.01:188; SN.98:43p

Baptême. A Coruña. [1893] 10-
January/1895. Oil on wood. 9,4 x 15,4 cm.
Museu Picasso, Barcelona. Donation 1970.

OPP.95:254; C:292; MPB:110.126;
P.I:16; PP.95:059; MG.15*:134;
TK.00*:n/a; WS.95a*:3





L'homme au béret. A Coruña. [February]/1895. Oil on canvas. 50,5 x 36 cm. Museu Picasso, Barcelona. Donation 1970.

OPP.95:072; C:19; MPB:110.058; P.I:53; PP.95:014; CR.98:21p; DP.20:72p; GP.96:33p; MG.15*:155; PJ.02:36p; TO.95b:13p

Portrait d'homme barbu. A Coruña. [February]/1895. Oil on parchment. 18,5 cm. Museu Picasso, Barcelona. Donation 1970.

OPP.95:076; MPB:110.908; P.I:59; PP.9495:010; MG.15:41p; NS.01:135; PJ.02*:16



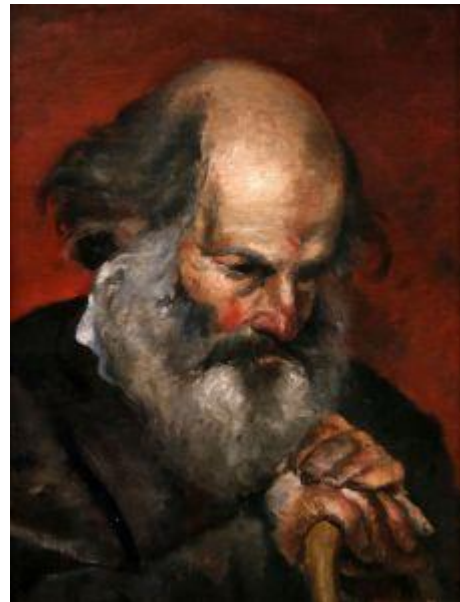


Portrait d'homme barbu. A Coruña. [February]/1895. Oil on canvas. 47,5 x 36 cm. The Picasso Estate.

OPP.95:077; P.I:61; PP.95:009; Z.XXI:34; MG.15*:148

Portrait d'homme barbu. A Coruña. [February]/1895. Oil on canvas. [47,5 x 35] 48 x 36 cm. Catherine Hutin-Blay Collection, Paris. Formerly Jacqueline Roque Picasso Collection.

OPP.95:078; P.I:62; PP.95:010; Z.XXI:24; LM.17*:n/a; PJ.02*:17





Portrait d'homme barbu. A Coruña. [February]/1895. Oil on canvas. 52 x 37 cm. The Picasso Estate.

OPP.95:079; P.I:65; PP.95:011; Z.VI:23; MG.15*:146; MM.97*:6

La fillette aux pieds nus. A Coruña. [Early] 25-February~11-March [Spring]/1895. Oil on canvas. 75 x 50 cm. Musée Picasso, Paris. Dation 1979.

OPP.95:003; MPP:2; P.I:69; PP.95:060; Z.I:3; AC.46:4; AC.81:25p; BD.16*:1; BS.55:5; CK.10:11; DD.61:203p; DP.20:72p; EC.02:23; GA.14:40p; GC.96:41p; JC.40:34p; JF.96:27p; JG.84*:9; JL.71:198p; JR.91:53p; MA.08a*:n/a; ME.82a*:1; MG.15*:140; MM.97*:5; MN.80*:n/a; MP.85:2; NS.01:131; OR.90:23p; PA.79a*:2; PJ.02*:38; RB.99:16p; RI.03a:3; RP.60*:1; RP.67a:1; RP.81:1.2; SM.19*:n/a; SP.04*:n/a; TK.02*:n/a; TM.06:21p; UP.00:20; UW.88:38a; WS.95a:243p; WW.73:14p; WW.91:35p





L'homme à la casquette. A Coruña. [Early-March]/1895. Oil on canvas. 72,5 x 50 cm. Musée Picasso, Paris. Dation 1979.

OPP.95:015; MPP:1; P.I:64; PP.95:012; Z.I:4; AB.46:14p; AC.46:6; AC.81:60p; AP.89:14p; AP.97:14p; AS.60:1; BF.21:110p; BJ.19*:n/a; JR.91:54p; MA.08a*:n/a; MG.15*:161; MM.97:24p; MP.85:1; PA.79a*:1; PJ.02*:39; SD.05*:1; WR.96:253p; WW.91:11p

Profil de femme de Galice. A Coruña. [14-March]/1895. Oil on wood. 15,4 x 10 cm. Museu Picasso, Barcelona.

OPP.95:022; C:305; MPB:110.187; P.I:74; PP.95:018; MG.15*:81; PJ.02*:30





Laveuses. A Coruña. 14-March/1895. Oil on wood. 10 x 15,5 cm. Museo Picasso, Málaga. On temporary loan from Fundación Almine & Bernard Ruiz-Picasso para el Arte.

OPP.95:071; P.I:52; PP.95:036; Z.VI:20;
CG.04*:1; DP.20*:2; MG.04b*:1; MG.15*:83;
NC.17*:3; PJ.02*:31

Buste du père de l'artiste (Don José). A Coruña. [Mid-March]/1895. Oil on canvas. 29 x 20 cm. Musée Picasso, Paris. Formerly Maya Widmaier Picasso Collection, Paris.

OPP.95:026; P.I:114; PP.95:178; Z.XXI:33; JR.91:53p;
MG.15:335p





Portrait d'homme barbu. A Coruña. [Spring]/1895. Oil on canvas. 57 x 42 cm. Marina Picasso Collection. (Inv 12015). Courtesy Galerie Jan Krugier, Geneva.

OPP.95:014; P.I:60; PP.95:008; Z.XXI:37; GC.96:38p; GP.96:37p; MG.15:41p; MP.81*:5

Portrait de Dr. Ramón Pérez Costales. A Coruña. [January~August] [Spring]/1895. Oil on canvas. 52 x 37 cm. Private collection.

OPP.95:033; P.I:67; PP.95:022; Z.XXI:36; BS.55:2; JR.91:39p; MG.15*:125; MM.97:23p; NM.06:10p; PJ.02*:41; RI.03b:49p; WR.96:234p



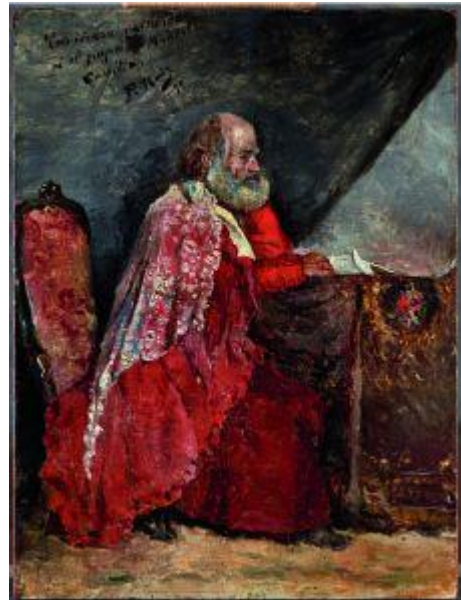


Maison de campagne. A Coruña. Spring/1895. Oil on panel. 13,6 x 22,4 cm. Museu Picasso, Barcelona. Donation 1970.

OPP.95:060; C:343; MPB:110.221; PP.96:313; MG.15:33p; RI.13*:197p; TO.94*:59

Portrait d'homme barbu (Cariñoso recuerdo al Papa Modesto Castillo). A Coruña. [Spring]/1895. Oil on wood. 21,3 x 15,8 cm. Private collection.

OPP.95:113; MG.15*:153; PJ.02*:18





Tête d'un homme chauve. Málaga. [April]/1895. Oil on canvas. [45 x 30] 34,4 x 29 cm. Museu Picasso, Barcelona. Donation 1970.

OPP.95:009; C:21; MPB:110.072; P.I:75; PP.95:020;
BA.00c*:n/a; JF.96:26p; LM.07*:5; PJ.02*:49;
RI.13*:290p

Maisons de campagne. A Coruña. April/1895. Oil on wood. 10 x 15,6 cm. Museu Picasso, Barcelona. Donation 1970.

OPP.95:042; C:297; MPB:110.152;
PP.95:016; MG.15*:95; PJ.02*:23;
TO.94*:10





Paysage près de Madrid. Madrid.
[Spring~Summer] April~May/1895. Oil on canvas
[OiC]. 27 x 39 cm. Private collection.

OPP.95:090; P.I:89; PP.95:063; Z.XXI:50;
TO.94:51p

Centaure et guerrier en combat. Málaga
[Barcelona]. [End-Spring]/1895. Lead
pencil on paper. 12 x 8 cm. Museu Picasso,
Barcelona. Donation 1970.

OPP.95:112; MPB:111.195; P.III:847;
PP.95:141





Étude académique: buste de personnage féminin, de profil.
Málaga [Barcelona]. [End-Spring]/1895. Graphite pencil on paper. 12 x 8 cm. Museu Picasso, Barcelona. Donation 1970.

OPP.95:122; MPB:111.169r; PP.95:097; BA.24a*:22p; WR.96:58p

Étude académique: tête d'homme. Málaga [Barcelona].
[End-Spring]/1895. Conté pencil on paper. 12 x 8 cm. Museu
Picasso, Barcelona. Donation 1970.

OPP.95:123; MPB:111.189; PP.95:129; BA.24a*:22p





Étude académique d'après un plâtre de la Vénus de Milo.
Málaga [Barcelona]. [End-Spring]/1895. Graphite pencil on paper. 12 x 8 cm. Museu Picasso, Barcelona. Donation 1970.

OPP.95:125; C:31; MPB:111.174r; PP.95:102; LE.21:299p

Étude académique: torse et jambes de cheval et d'homme. Málaga [Barcelona]. [End-Spring]/1895. Graphite pencil on paper. 8 x 12 cm. Museu Picasso, Barcelona. Donation 1970.

OPP.95:128; MPB:111.193; PP.95:137



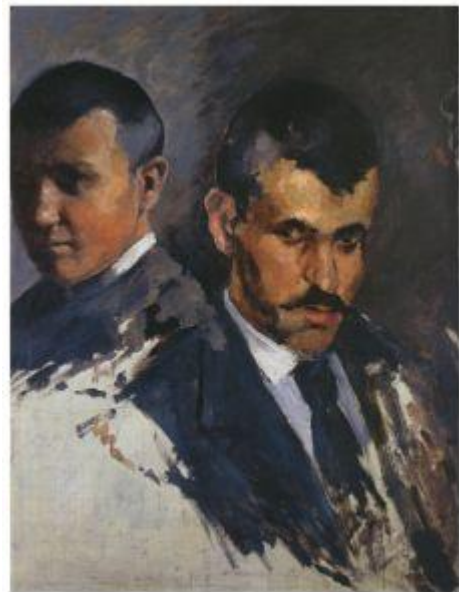


Paysage de port. Málaga. End-Spring~Summer/1895 [June~July/1896]. Oil on wood. 10 x 15,4 cm. Museu Picasso, Barcelona.

OPP.95:019; C:311; MPB:110.171; P.I:103; PP.96:334; TO.94*:55

Autoportrait auprès José Román. Málaga. End-Spring~Summer/1895. Oil on canvas. 60 x 45 cm. Marina Picasso Collection. (Inv 12020). Courtesy Galerie Jan Krugier, Geneva.

OPP.95:020; P.I:91; P.II:28; PP.95:075; Z.XXI:45; GC.81:1; JR.91:61p; MP.81*:2; UP.00:21; WR.96:112p; YP.13*:1



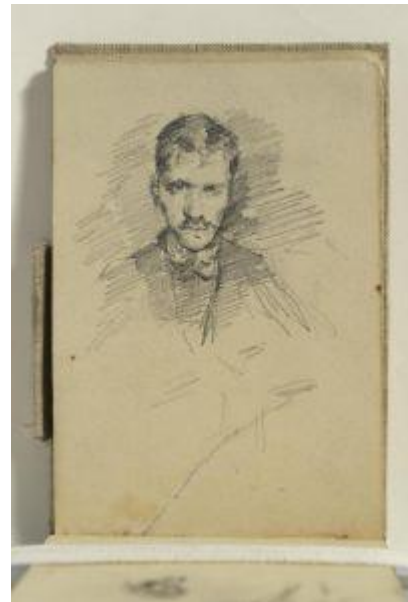


Nature morte aux fruits et pot. Málaga. End-Spring~Summer/1895. Oil on canvas. [110 x 80] 100 x 70,1 cm. Sotheby's. #362, N09498, 05/10/16.

OPP.95:091; P.I:90; PP.95:074; Z.VI:17; BS.55:4; JR.91:60p

Portrait de José Román. Málaga. End-Spring~Summer/1895. Lead pencil. 12 x 8 cm. Museu Picasso, Barcelona. Donation 1970.

OPP.95:092; MPB:111.178; P.I:92; PP.95:071





Portrait de petite fille. Málaga. End-Spring~Summer/1895. Lead pencil. 12 x 8 cm. Museu Picasso, Barcelona. Donation 1970.

OPP.95:093; MPB:111.180; P.I:95; PP.95:072

Picador démonté. Málaga. End-Spring~Summer/1895. Pencil on paper. S/U. Rafael Arocena de Ussia Collection, Mexico.

OPP.95:099; P.I:102; PP.95:082; MG.15:136p





Tante Pepa assise. Málaga. End-Spring~Summer/1895. Lead pencil on paper. 12 x 8 cm. Museu Picasso, Barcelona.

OPP.95:100; MPB:111.174; P.I:104; PP.95:070; JR.91:59p

Broussailles. Málaga. End-Spring/1895~1896. Oil on panel. 10,1 x 15,7 cm. Museu Picasso, Barcelona.

OPP.95:062; C:322; MPB:110.142; PP.96:317; TO.94*:48





Étude académique: nu masculin, de profil; avec un bâton.

Barcelona. [End-Spring]/1895~1897. Graphite pencil, conté pencil, pen & ink on laid paper. 48,3 x 31,5 cm. Museu Picasso, Barcelona. Donation 1970.

OPP.95:124; C:479; MPB:110.849; PP.9597:013; CK.10*:28; TK.02*:n/a; TO.97*:24a

Viellard assis de profil. Málaga.
June/1895. Lead pencil on paper. 12 x 8
cm. Museu Picasso, Barcelona. Donation
1970.

OPP.95:098; MPB:111.170; P.I:100;
PP.95:081





Vieillard de profil. Málaga. [Summer] July~August/1895. Lead pencil on paper. 12 x 8 cm. Museu Picasso, Barcelona. Donation 1970.

OPP.95:095; MPB:111.165; P.I:97; PP.95:078

Le commandant. [Málaga]. Summer/1895 [~1896]. Oil on wood. 15,6 x 10,1 cm. Museu Picasso, Barcelona. Donation 1970.

OPP.95:107; C:301; MPB:110.144r; P.I:107; PP.9596:004; JR.91:61p



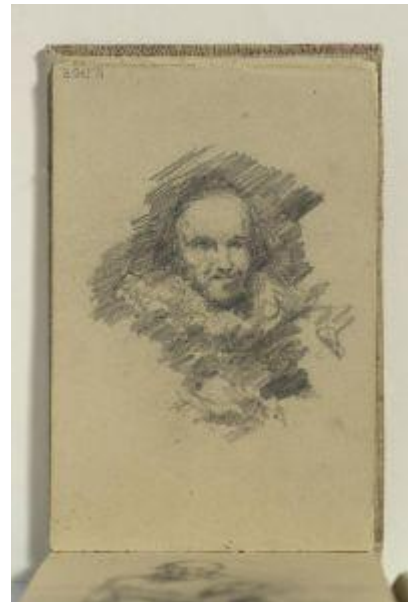


Port de Málaga. Málaga. [End-Spring~Summer] [July]/1895. Oil on canvas. [27,3 x 34,8] 27,6 x 35 cm. Christie's. #179, 6555, 02/05/02.

OPP.95:036; P.I:94; PP.95:083; LO.71a*:1

Calabacillas (d'après Velázquez). Madrid. [Spring] [July]/1895. Graphite pencil on paper. 12 x 8 cm. Museu Picasso, Barcelona. Donation 1970.

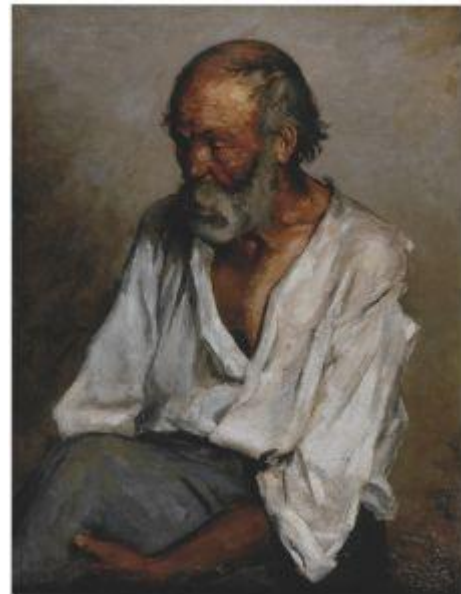
OPP.95:088; MPB:111.170r; P.I:87; PP.95:064; BS.22:182p; EC.16:9; GP.96:39p; JL.14*:104; JR.91:57p; TV.06*:n/a





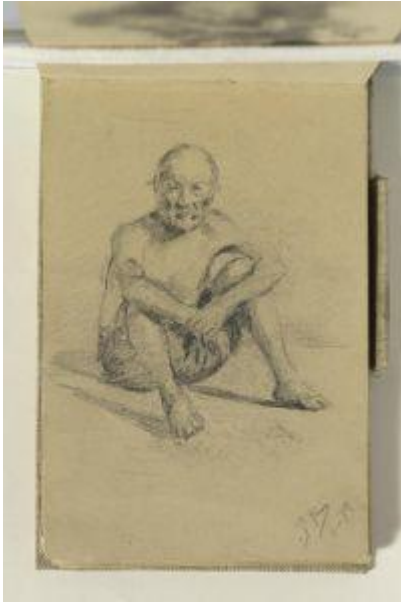
Niño de Vallecas (d'après Velázquez). Madrid. [Spring] [July]/1895. Graphite pencil on paper. 12 x 8 cm. Museu Picasso, Barcelona. Donation 1970.

OPP.95:089; MPB:111.172r; P.I:88; PP.95:065; GP.96:39p; JL.14*:103



Tête de vieillard. Málaga. [Summer] July~August/1895. Oil on canvas. 82 x 62 [62,5] cm. Museu de l'Abadia i Santuari de Montserrat. (Inv NR.200.502). Sala Collection.

OPP.95:001; P.I:101; PP.95:076; Z.I:1; AC.46:3; BS.55:356p; CK.10*:19; EC.02:19; GP.96:41p; JB.65:3; JL.06:35p; JR.91:59p; LM.07*:6; MG.15:27p; MM.97*:W7; PJ.02*:50; RB.97:20p; RI.05:134p; RI.13*:291p; SN.92:12

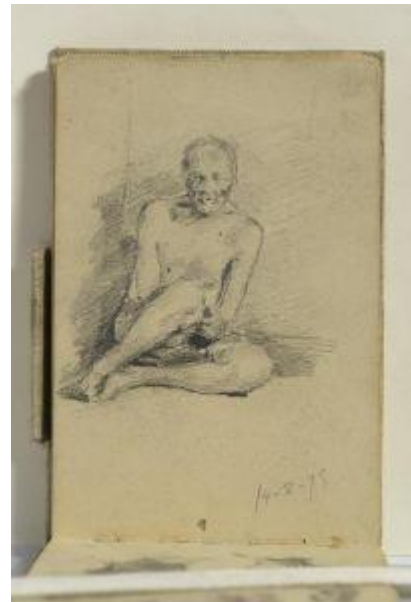


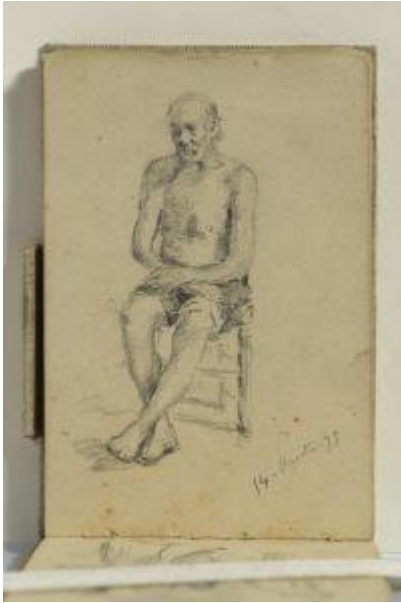
Vieillard assis. Málaga. [June] July~August/1895. Lead pencil on paper. 12 x 8 cm. Museu Picasso, Barcelona. Donation 1970.

OPP.95:094; MPB:111.171; P.I:96; PP.95:077; JR.91:59p

Vieillard assis. Málaga. 14-August/1895. Lead pencil on paper. 12 x 8 cm. Museu Picasso, Barcelona. Donation 1970.

OPP.95:096; MPB:111.168; P.I:98; PP.95:080





Vieillard assis sur une chaise. Málaga. 14-August/1895. Lead pencil on paper. 12 x 8 cm. Museu Picasso, Barcelona. Donation 1970.

OPP.95:097; MPB:111.167; P.I:99; PP.95:079; CK.10:20

Alicante vu du bateau. [Alicante].
September/1895. Oil on wood. 9,9 x 15,4
cm. Museu Picasso, Barcelona. Donation
1970.

OPP.95:008; C:308; MPB:110.182;
P.I:106; PP.95:084; JM.07*:2; SL.04*:n/a;
TO.94*:15





Vue de port de Valence. On board ship [Valencia]. September/1895. Oil on wood. 10,1 x 15,5 cm. Museu Picasso, Barcelona.

OPP.95:021; C:309; MPB:110.166; P.I:108; PP.95:086; JM.07*:3; TO.94*:16

Le montagne de Cartagena. Cartagena. September/1895. Oil on canvas. 28 x 34,7 cm. Museu Picasso, Barcelona. Donation 1970.

OPP.95:046; C:77; MPB:110.074; P.I:105; PP.95:085; TO.94*:14



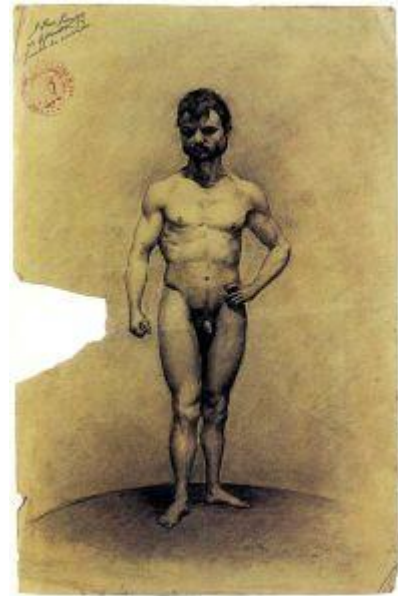


Paysage maritime. Málaga~Barcelona. [September]/1895 [1896]. Oil on panel. 10,1 x 15,5 cm. Museu Picasso, Barcelona. Donation 1970.

OPP.95:047; MPB:110.165; P.I:185; PP.95:087; TO.94*:17

Homme nu debout. Barcelona. 25-September/1895 [1896]. Conté pencil on paper. 50,5 x 32,5 cm. Maya Widmaier Picasso Collection, Paris.

OPP.95:027; P.I:116; PP.95:162; Z.VI:47; EC.02:15; EV.10*:36p; GP.96:45p; JF.96:25p; JP.66:2; JP.96*:1; JR.91:63p; LB.58:16p; PD.65:19p; RP.81:1.3; WR.80:17p; WS.88:102; WW.73:16p





Nu (Étude). Barcelona. 25-September/1895.
Charcoal & black pencil touches on laid, ivory
paper. 47,4 x 61 cm. Museu Picasso, Barcelona.
Donation 1970.

OPP.95:041; C:471; MPB:110.886; PP.95:160;
AB.08*:n/a; GI.09*:n/a; GM.11*:3; JR.91:63p;
MG.92*:2; TK.02*:n/a; TO.97*:12a

**Détail de son dessin d'admission à La
Llotja**. Barcelona. 25-September/1895.
Black pencil on laid ivory paper with
watermark. 61 x 47,4 cm. Museu Picasso,
Barcelona. Donation 1970.

OPP.95:174; C:406; MPB:110.886r;
PP.95:161; TO.97*:12b





Repos pendant le voyage en Egypte. Barcelona. [End-September~December]/1895. Oil on canvas. 50 x 36 cm. The Picasso Estate.

OPP.95:002; P.I:131; PP.95:259; Z.XXI:44; DD.61:41p; EV.15:63p; JR.91:75p; MM.85a*:1; NM.06:15p; PJ.02*:19

Main de Don José Ruiz Blasco, père de l'artiste. Barcelona. [End-September~December]/1895. Oil on canvas. [25 x 19] 27 x 15 cm. The Picasso Estate.

OPP.95:023; P.I:112; PP.95:257; Z.XXI:22; PJ.02*:47



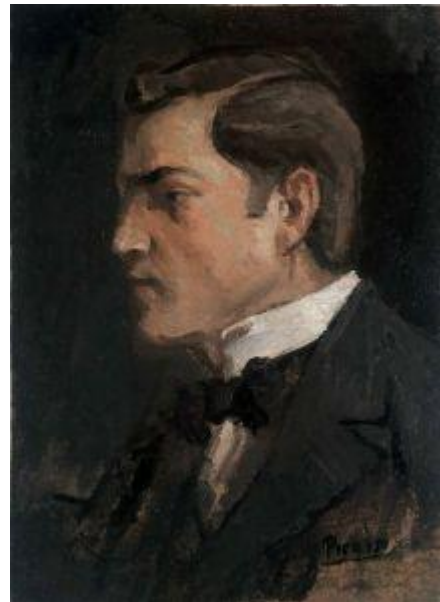


Port de Barcelone. Barcelona. [End-September~December]/1895 [1896]. Oil on wood. 18 x 12,7 cm. Museu Picasso, Barcelona. Donation 1970.

OPP.95:024; C:352; MPB:110.201; P.I:109; PP.96:409; BA.24a*:28p; CR.07:43p; EV.10*:32p; EV.15:119p; PA.21g*:272p; PM.97:15p; TO.94*:73

Portrait de Manuel Pallarès. Barcelona. [End-September~December]/1895. Oil on wood board. 35,3 x 25 cm. Private collection. Formerly Manuel Pallarès Collection.

OPP.95:028; P.I:120; PP.95:239; Z.XXI:31; EV.15:79p; JP.66:6; JR.91:65p; NM.95:16p





Portrait de María Picasso, la mère de l'artiste. Barcelona. [End-September~December]/1895 [~1896]. Watercolor on paper. 30,5 x 23,8 cm. Museu Picasso, Barcelona. Donation 1970.

OPP.95:029; C:414; MPB:110.234; P.I:126; PP.9596:015; JG.84*:13; RD.00*:2; TK.02*:n/a; TO.97*:37

Catalan avec la casquette typique d'un paysan et croquis divers. Barcelona. [End-September~December]/1895 [~1896]. Watercolor & sepia ink wash on laid, ivory paper [Obverse of *Arlequin et deux masques*]. 47,8 x 21 cm. Museu Picasso, Barcelona. Donation 1970.

OPP.95:030; C:443; MPB:110.235; P.I:128; PP.9596:016; JF.96:24p; PE.17*:155p; TK.02*:n/a; TO.97*:38a



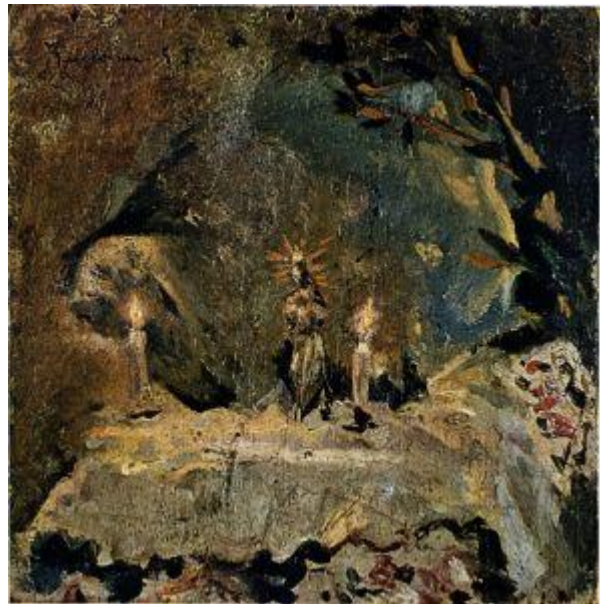


Femme nue vue de dos (d'après Arcadi Mas i Fontdevilla). Barcelona. [End-September~December]/1895. Oil on wood. 22,3 x 13,7 cm. Museu Picasso, Barcelona. Donation 1970.

OPP.95:031; C:38; MPB:110.212; P.I:122; PP.95:150; AP.11:9p; EV.10*:37p; GS.02*:n/a; JR.91:65p; WW.91:37p

Autel de la Vierge Bénie. Barcelona. [End-September~December]/1895. Oil. 13 x 13 cm. The Picasso Estate.

OPP.95:032; P.I:130; PP.95:258; Z.XXI:43; DD.61:203p





Portrait d'homme barbu. [Barcelona]. [End-September~December]/1895. Oil on canvas. 43,5 x 31,5 cm. Museo Picasso, Málaga. Gift of Bernard Ruiz-Picasso.

OPP.95:038; MPM:2.134; P.I:63; PP.95:013; Z.XXI:42; DP.20*:4; GS.03:1.2; MG.15*:154; NC.17*:5; PJ.02*:65

Étude académique d'après un plâtre de la Vénus de Milo. Barcelona. [End-September]/1895~1896. Charcoal & black pencil on laid, ivory paper. 61,8 x 47,7 cm. Museu Picasso, Barcelona. Donation 1970.

OPP.95:206; C:468; MPB:110.876; PP.9596:030; AB.08*:n/a; BA.24a*:20p; LA.16*:76p; LE.21*:228; RD.00*:1; TK.02*:n/a; TO.97*:17a





Étude académique: buste d'homme nu.

Barcelona. [End-September]/1895~1896. Oil on wood. 52 x 50,3 cm. Museu Picasso, Barcelona. Donation 1970.

OPP.95:182; MPB:110.052; PP.9597:005; EV.15:57p

Étude académique: homme nu. Barcelona. [End-September]/1895~1896. Charcoal, conté pencil & chalk on paper. 59 x 39,6 cm. Museu Picasso, Barcelona. Donation 1970.

OPP.95:204; MPB:110.890; PP.9596:064; BA.05b*:n/a; MI.18*:n/a





Études des parents de l'artiste et autres croquis. Barcelona. [End-September]/1895~1896. Pen & sepia ink on yellowish paper. 20,5 x 13,1 cm. Museu Picasso, Barcelona. Donation 1970.

OPP.95:209; C:435; MPB:110.615; PP.9596:045; JG.84*:16; TK.02*:n/a; TO.97*:30a

Buste de gentilhomme du XIXe siècle. Barcelona. [End-September]/1895~1896. Charcoal & chalk touches on dark grey paper. 65 x 50,1 cm. Museu Picasso, Barcelona. Donation 1970.

OPP.95:211; MPB:110.700r; PP.9596:057; MG.15*:28; TO.97*:43b





La première communion. Barcelona. [End-September]/1895 ~ [1st-Quarter]/1896. Oil on canvas. 166 x 118 cm. Museu Picasso, Barcelona. Donation 1970.

OPP.95:004; C:46; MPB:110.001; P.I:142; PP.96:009; Z.XXI:49; AP.11:11p; AP.89:15p; AP.97:15p; BL.91:38p; BM.05:215p; BS.55:6; CK.10:30; CR.98:27p; EC.02:25; EV.10*:45p; EV.15:73p; GA.14:12p; GB.87:8; GP.96:51p; IW.93:6p; JG.84*:20; JP.66:14; JR.91:70p; LE.88a*:n/a; LU.86*:n/a; MG.03b:31p; MM.00:9p; MM.97:25p; NM.95:14p; NS.01:106; OW.13:270p; PD.06*:n/a; PD.09:12p; PJ.02:25p; PL.03:1; RB.97:21p; TK.02*:n/a; TO.95b:17p; UP.00:13; VB.99:8p; WR.80*:14p; WS.94:20p; WS.95a:17p; WW.91:38p

La collection. Barcelona. [End-September]/1895~1896. Oil on canvas. 18,5 x 23 cm. The Picasso Estate.

OPP.95:034; P.I:134; PP.9596:068; Z.XXI:52; AC.81:27p; DD.61:43p





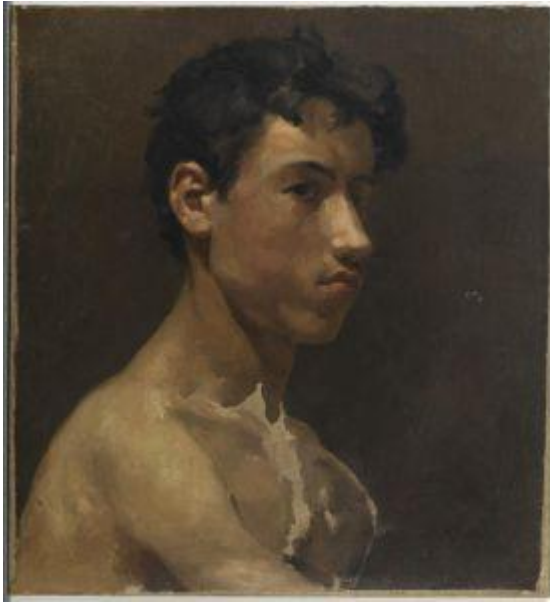
Étude académique: homme nu debout. Barcelona. [End-September]/1895~1896. Charcoal & conté pencil on laid, ivory paper. 59,5 x 41,8 cm. Museu Picasso, Barcelona. Donation 1970.

OPP.95:207; MPB:110.882; PP.9597:020; NS.01:282;
TO.97*:21a

Étude académique: homme assis. Málaga.
1895~1897. Oil on canvas. 82 x 61 cm. Museu Picasso,
Barcelona. Donation 1970.

OPP.95:007; MPB:110.047; P.I:180; PP.9597:001;
AC.81:62p; AP.11:8p; CH.10*:73p; EV.15:51p;
GP.96:48p; MF.01*:2; MM.00:8p; MM.97*:9; PJ.02*:55;
WW.91:42p





Étude académique: buste de garçon. Barcelona. [End-September]/1895~1897 [1896]. Oil on canvas. 43 x 39,3 [99,3] cm. Museu Picasso, Barcelona. Donation 1970.

OPP.95:012; C:357; MPB:110.056; P.I:178; PP.96:020; AC.81:28p; EV.15:53p; JF.96:29p; NS.01:100; WW.91:44p

Nu (Étude). Barcelona. [End-September]/1895~1897. Charcoal, stump & black pencil on paper. 66,5 x 30,1 cm. Museu Picasso, Barcelona.

OPP.95:037; C:473; MPB:110.872r; PP.9597:018; MG.15*:37; TO.97*:125b





Homme drapé d'une tunique. Barcelona. 30-September/1895.
Conté pencil on paper. 47 x 31,2 cm. The Picasso Estate.

OPP.95:025; P.I:117; PP.95:163; Z.VI:45; BE.09*:8; JP.66:1;
JR.91:63p

Toits, parapet et citerne. Barcelona.
October/1895~June/1896. Oil on canvas
glued on cardboard. 16,5 x 25,1 cm. Museu
Picasso, Barcelona.

OPP.95:063; C:328; MPB:110.228;
PP.9596:014; CR.07:84p; CR.14:9;
TO.94*:19





Paysage de Barcelone. Barcelona. 4-October/1895. Oil on panel. 10 x 15,4 cm. Museu Picasso, Barcelona.

OPP.95:050; C:310; MPB:110.172; P.I:124; PP.95:217; CR.07:84p; TO.94*:18

Requête formelle de copier à l'académie. Barcelona. 5-October/1895. Ink on paper. S/U. Private collection.

OPP.95:238; JP.80:88p





Lola, sœur de l'artiste. Barcelona. 20-October/1895. Pencil on paper. 12 x 8,2 cm. Museu Picasso, Barcelona. Donation 1970.

OPP.95:105; MPB:111.156; P.I:127; PP.95:234

Le père de l'artiste emmitoufflé. [A Coruña] [Málaga] Barcelona. December/1895. Watercolor on paper. 10 x 14 cm. Museo de Málaga. (Inv Ba/CE00344).

OPP.95:244; P.I:125; PP.95:264;
Z.XXI:35; BL.91:38p; EC.11*:4.2;
JG.84*:18; JP.66:4; JR.91:86p;
PD.09:12p; RI.13*:182p; UP.00:11;
WS.11:19p





Le père du peintre. [A Coruña] [Málaga] Barcelona.
[December]/1895. Watercolor [OïC]. S/U. Private collection.
Formerly Sotheby's. 04/27/67.

OPP.95:255

La fontaine. [A Coruña] [Málaga] Barcelona.
[December]/1895. Watercolor [OïC]. S/U. Private
collection. Formerly Sotheby's. 04/27/67.

OPP.95:256





Six études de mains et étude de tête du père de l'artiste.
[Barcelona]. 13-December/1895. Pen & sepia ink on smooth white paper. 20,7 x 13 cm. Museu Picasso, Barcelona. Donation 1970.

OPP.95:199; MPB:110.255r; PP.95:256; TO.97*:9b

Le fourragère. Coruña. 1895. Oil on silk cloth. 17,5 x 17,5 cm. Museu Picasso, Barcelona.

OPP.95:043; C:294; MPB:110.116;
PP.95:046; MG.15:217p; TO.94*:11





Paysage: plage à Orzan. A Coruña. 1895. Oil on canvas. 10 x 17,8 cm. Museu Picasso, Barcelona.

OPP.95:044; C:13; MPB:110.115; PP.95:044; AC.09*:n/a; MG.15*:99; PJ.02*:24; TO.94*:12; TO.95b:12p

Paysage maritime (La tour d'Hercule).
A Coruña. [1894~] 1895. Oil on panel.
10,3 x 15,4 cm. Museu Picasso, Barcelona.
Donation 1970.

OPP.95:045; C:335; MPB:110.136;
P.I:38; PP.95:045; AC.09*:n/a; CR.07:20p;
GP.96:31p; JR.91:36p; MG.15*:100;
PJ.02*:14; TO.94*:13





Lac dans le jardin public Citadella. Barcelona. 1895. [Lead pencil] Pen on grey paper. 19,9 x 27,5 cm. Private collection.

OPP.95:048; P.I:111; PP.95:148; Z.VI:28;
CR.07:63p; JP.66:3; TO.94:69p

Cascade dans le jardin public Citadella. Barcelona. 1895. Lead pencil on grey paper. 18,2 x 31,4 cm. The Picasso Estate.

OPP.95:049; P.I:110; PP.95:147; Z.VI:27;
TO.94:69p





Paysage de montagne. Barcelona. 1895. Lead pencil on paper. 8,2 x 12 cm. Museu Picasso, Barcelona. Donation 1970.

OPP.95:052; MPB:111.125; PP.95:173;
TO.94*:25

Étude académique. Barcelona. 1895. Lead pencil on paper. 36,5 x 26,5 cm. Museu Picasso, Barcelona.

OPP.95:053; C:426; MPB:110.348; PP.9597:007;
TO.94*:21





Buissons et arbustes. Barcelona. 1895. [Conté crayon] lead pencil on paper. 12 x 8,2 cm. Museu Picasso, Barcelona. Donation 1970.

OPP.95:055; MPB:111.128r; PP.95:180; TO.94*:23

Étude. Barcelona. 1895. Lead pencil on paper. 12 x 8,2 cm. Museu Picasso, Barcelona.

OPP.95:056; MPB:111.126r; PP.95:176; TO.94*:24





A la escuela: Lola, sœur de l'artiste. A Coruña. 1895. [Lead pencil] pen & black ink. 23 x 15,1 cm. Musée Picasso, Paris. Dation 1979.

OPP.95:064; MPP:406; P.I:80; PP.95:199; Z.XXI:26; BL.91*:15; CK.10:8; MG.15*:116; PA.79a*:379; PD.06*:201p; PJ.02*:42; TO.97:15p; WS.95a*:4

Petite fille assise. A Coruña. 1895. Oil on canvas. 13,8 x 9,5 cm. Museu Picasso, Barcelona. Donation 1970.

OPP.95:065; C:293; MPB:110.121; P.I:68; PP.95:035; MG.15*:143; PJ.02*:29; WS.95a*:2





Homme assis et buste de profil. A Coruña. 1895. Oil on wood. [32] 22 x 19 cm. The Picasso Estate.

OPP.95:067; P.I:43; PP.95:007; Z.VI:16; PJ.02*:13; TO.97:48p

Oiseaux. A Coruña. 1895. Oil on wood. 10 x 15,6 [17,1] cm. Museu Picasso, Barcelona. Donation 1970.

OPP.95:068; C:299; MPB:110.156;
P.I:44; PP.95:028; GC.96:10p; MG.15*:47;
PJ.02*:33; TO.97:18p





Couple. A Coruña. [1894~] 1895. Pencil on paper. [19,5 x 13,5] 19 x 12,5 cm. Museu Picasso, Barcelona. Carnet A Coruña 2. Dation 1970.

OPP.95:069; MPB:111.504; P.I:48; PP.9495:040

Famille galiciene. A Coruña. 1895. Pen & ink on paper. [19,7 x 27,9] 19,9 x 27,8 cm. Museu Picasso, Barcelona. Donation 1970.

OPP.95:073; C:400; MPB:110.375;
P.I:56; PP.95:049; MG.15*:75; PJ.02*:46;
TK.02*:n/a; TO.97*:7a





Caricatures de torero et de prêtre. A Coruña. [1894] 1895. Pen & ink on paper [Reverse of *Scène galiciene*]. [13,3 x 20,8] 13,2 x 21 cm. Caixa Galicia Foundation, Vigo. Formerly Marina Picasso Collection. (Inv 00019).

OPP.95:074; P.I:57; PP.95:051; Z.VI:49; BL.91:78p; JG.84*:5; MG.15:224p; MP.81*:1

Scène galiciene. A Coruña. [1894] 1895. Pen & ink on paper [Obverse of *Portrait de la mère de l'artiste et autre croquis*]. [13,3 x 20,8] 13,2 x 21 cm. Caixa Galicia Foundation, Vigo. Formerly Marina Picasso Collection. (Inv 00019).

OPP.95:075; P.I:58; PP.95:039; Z.VI:34; FS.82:21p; JG.84*:5; MG.15*:89; MP.81*:1; NS.01:130





Le bateau. A Coruña. [1895] [1896]. Oil on wood. 9,9 x 15,5 cm. Museu Picasso, Barcelona. Donation 1970.

OPP.95:080; MPB:110.183r; P.I:70; PP.96:333

Scène de campagne. A Coruña. 1895. Pencil on paper. S/U. The Picasso Estate.

OPP.95:081; P.I:72; PP.95:041; PJ.02*:27





Tête de femme galiciene. A Coruña. 1895. Oil on canvas. 45 x 30 cm. Catherine Hutin-Blay Collection, Paris. Formerly Jacqueline Roque Picasso Collection.

OPP.95:082; P.I:76; PP.95:019; Z.XXI:29; LM.17*:n/a; PJ.02*:37

Femme galicien avec seau à lait (esperando la vez).
A Coruña [Barcelona]. 1895. Pen & ink on paper. 22 x 16 cm. Marina Picasso Collection. (Inv 00044). Courtesy Galerie Jan Krugier, Geneva.

OPP.95:083; P.I:79; PP.95:038; Z.VI:31; AC.46:2;
MG.15*:84; MP.81*:4; WS.11:19p





Bateaux sur l'estuaire. A Coruña. 1895. Pen & ink on paper. 10,1 x 16,3 cm. The Picasso Estate.

OPP.95:084; P.I:81; PP.95:149; Z.VI:15;
P.J.02*:25

Lola et sa poupée. A Coruña [Málaga].
[1895]. Pen & ink, conté pencil & colored
pencil on paper. 19,6 x 20,5 cm. Museu
Picasso, Barcelona. Donation 1970.

OPP.95:087; C:408; MPB:110.829; P.I:86;
PP.95:053; MG.15*:118; P.J.02*:44;
TK.02*:n/a; TO.97*:28a





Manuel Pallarès dans son atelier. Barcelona. 1895. Pencil on white paper. 31 x 24,4 [24] cm. Museu Picasso, Barcelona. Donation 1970.

OPP.95:101; C:26; MPB:110.360; P.I:118; PP.95:236; GP.96:47p; PB.81*:2A.1; TK.02*:n/a; TO.97*:27

Profil de Manuel Pallarès. Barcelona. 1895. Pen & ink. 26 x 19,5 cm. Private collection, Barcelona. Formerly Manuel Pallarès Collection.

OPP.95:102; P.I:119; PP.95:238; Z.XXI:27; AC.09:71p; JP.66:9





Étude académique d'après un plâtre de la Vénus de Milo. Barcelona. 1895 [1896]. Conté pencil on paper. 30,7 x 47,8 cm. Museu Picasso, Barcelona. Donation 1970.

OPP.95:103; C:469; MPB:110.856r; P.I:121; PP.9596:032; LE.21:300p; MM.97:80p; NS.01:110

Le clocher de Santa María del Mar. Barcelona. 1895 [~1896]. Oil on wood. 10,1 x 15,6 cm. Museu Picasso, Barcelona. Donation 1970.

OPP.95:104; MPB:110.144; P.I:123; PP.9596:001; CR.07:87p; GI.95*:n/a





Personnage du XIXe siècle. Barcelona. 1895. [Conté] graphite pencil on paper. [11,5 x 8,1] 12 x 8 cm. Museu Picasso, Barcelona. Donation 1970.

OPP.95:106; C:409; MPB:110.600; P.I:129; PP.95:263



Buste de garçon. Barcelona. 1895. Oil on canvas. 45,7 x 37,5 cm. Private collection, Barcelona.

OPP.95:108; FC.00*:1; GI.95*:9; JP.96*:3



Deux chambres de la maison de Dr. Ramón Pérez Costales. A Coruña. 1895. Oil on wood. 9,9 x 15,5 cm. Museu Picasso, Barcelona. Donation 1970.

OPP.95:109; C:22; MPB:110.193; PP.95:023; JR.91:39p; MG.15*:126

Annotations. Barcelona. 1895. Conté pencil on paper. 16 x 15,6 cm. Museu Picasso, Barcelona. Donation 1970.

OPP.95:110; MPB:110.400r; PP.9596:035





Buste de jeune fille. Barcelona. 1895. Lead pencil on paper. 12 x 8,2 cm. Museu Picasso, Barcelona. Donation 1970.

OPP.95:111; MPB:111.133; P.II:12; PP.95:189

Étude de linges. A Coruña. 1895 [1899~1900]. Conté crayon & chalk on grey paper. [31,4 x 23,8] 31,5 x 24 cm. Private collection.

OPP.95:114; PP.9900:391; Z.VI:239; PJ.02*:22





Portrait de fillette. A Coruña. September/1894~] 1895. Lead pencil on grey paper. [31,4 x 23,8] 31,5 x 24 cm. Private collection.

OPP.95:115; PP.95:073; Z.VI:29; PJ.02*:43



Famille caricaturée. A Coruña. 1895. Pen & ink on paper. [25,5] 27,5 x 18 cm. Private collection.

OPP.95:119; PP.95:050; Z.VI:37; BL.91:78p; WS.95a*:5

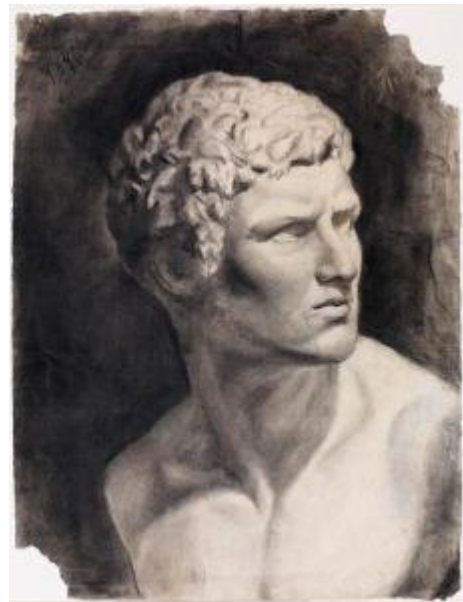


Maternité. A Coruña [Barcelona]. 1895. Color pencil & pastel on paper. [15,7 x 22] 15,5 x 21,7 cm. Art Gallery Jean Paul Perrier, Barcelona. 2010.

OPP.95:120; RD.11*:2

Étude académique: buste d'homme. Barcelona. 1895. Charcoal, stump & chalk touches on paper. 63 x 47,3 cm. Museu Picasso, Barcelona. Donation 1970.

OPP.95:121; C:50; MPB:110.873; PP.95:156;
AB.08*:n/a; LE.21*:224*; MG.15*:36; TK.02*:n/a;
TO.97*:15a





Étude académique: écuyer grec. [Barcelona].
1895. Graphite pencil & conté pencil on paper.
28,3 x 29,9 cm. Museu Picasso, Barcelona.
Donation 1970.

OPP.95:126; C:465; MPB:110.694r; PP.95:155;
CK.10*:4

Étude académique: torse d'homme. Barcelona. 1895.
Charcoal & black pencil on laid, ivory paper. 62,2 x 47,5
cm. Museu Picasso, Barcelona. Donation 1970.

OPP.95:127; C:470; MPB:110.877; PP.95:157;
MG.15:83p; TO.97*:14





Scène d'intérieur (Étude), Málaga [Barcelona]. 1895. Graphite pencil on paper. 12 x 8 cm. Museu Picasso, Barcelona. Donation 1970.

OPP.95:129; MPB:111.168r; PP.95:095

Croquis divers. A Coruña. [1894~] 1895. Sepia wash, graphite pencil & conté pencil on paper. 13,5 x 19,5 cm. Museu Picasso, Barcelona. Carnet A Coruña 2. Donation 1970.

OPP.95:130; MPB:111.507; PP.9495:046





Études. Málaga [Barcelona]. 1895. Conté pencil & graphite pencil on paper. 12 x 8 cm. Museu Picasso, Barcelona. Donation 1970.

OPP.95:131; MPB:111.169; PP.95:096

Buste de femme au chapeau, de profil. Málaga [Barcelona]. 1895. Graphite pencil on paper. 12 x 8 cm. Museu Picasso, Barcelona. Donation 1970.

OPP.95:132; MPB:111.165r; PP.95:091





Buste du père de l'artiste, de trois-quarts. Málaga [Barcelona]. 1895. Graphite pencil on paper. 12 x 8 cm. Museu Picasso, Barcelona. Donation 1970.

OPP.95:133; MPB:111.181r; PP.95:114

Buste d'homme au chapeau. Málaga [Barcelona]. 1895. Graphite pencil on paper. 12 x 8 cm. Museu Picasso, Barcelona. Donation 1970.

OPP.95:134; MPB:111.172; PP.95:099





Buste de personnage masculin, de profil (Oncle Salvador). Málaga [Barcelona]. 1895. Graphite pencil on paper. 12 x 8 cm. Museu Picasso, Barcelona. Donation 1970.

OPP.95:135; MPB:111.173; PP.95:100; JR.91:59p

Tête d'enfant, de profil. Málaga [Barcelona]. 1895. Graphite pencil on paper. 12 x 8 cm. Museu Picasso, Barcelona. Donation 1970.

OPP.95:136; MPB:111.175; PP.95:103





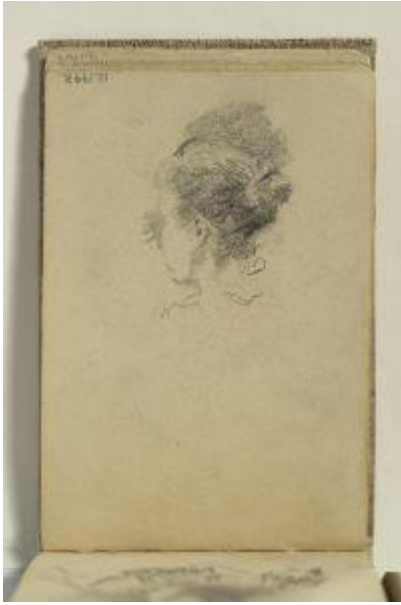
Caricatures de soldats. [Barcelona]. 1895.
Conté pencil & pen on paper. 14,2 x 20,3 cm.
Museu Picasso, Barcelona. Donation 1970.

OPP.95:138; MPB:110.607r; PP.95:152

Colombes. A Coruña. 1895. Graphite on paper. 13,2 x
10,4 cm. Museu Picasso, Barcelona. Donation 1970.

OPP.95:140; C:376; MPB:110.871; PP.95:056





Croquis. Málaga [Barcelona]. 1895. Graphite pencil on paper. 12 x 8 cm. Museu Picasso, Barcelona. Donation 1970.

OPP.95:141; MPB:111.179r; PP.95:111

Croquis. Málaga [Barcelona]. 1895. Graphite pencil & conté pencil on paper. 12 x 8 cm. Museu Picasso, Barcelona. Donation 1970.

OPP.95:142; MPB:111.185r; PP.95:122





Croquis. Málaga [Barcelona]. 1895. Graphite pencil on paper. 12 x 8 cm. Museu Picasso, Barcelona. Donation 1970.

OPP.95:143; MPB:111.171r; PP.95:098

Croquis. Málaga [Barcelona]. 1895. Conté pencil on paper. 12 x 8 cm. Museu Picasso, Barcelona. Donation 1970.

OPP.95:144; MPB:111.178r; PP.95:109





Croquis. Málaga [Barcelona]. 1895. Graphite pencil & conté pencil on paper. 12 x 8 cm. Museu Picasso, Barcelona. Donation 1970.

OPP.95:145; MPB:111.180r; PP.95:112

Croquis. Málaga [Barcelona]. 1895. Conté pencil on paper. 8 x 12 cm. Museu Picasso, Barcelona. Donation 1970.

OPP.95:146; MPB:111.173r; PP.95:101





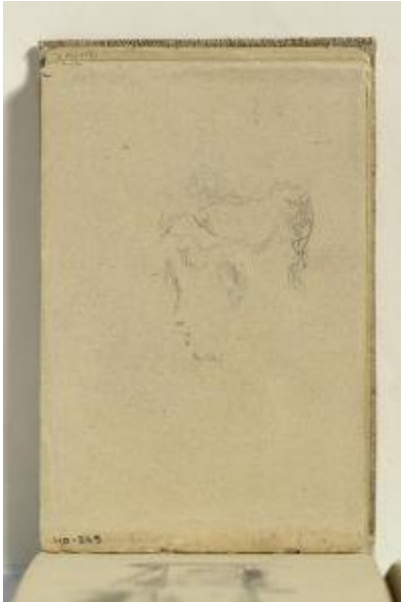
Croquis: visage. Málaga [Barcelona]. 1895. Graphite pencil on paper. 12 x 8 cm. Museu Picasso, Barcelona. Donation 1970.

OPP.95:147; MPB:111.175r; PP.95:104

Croquis. Málaga [Barcelona]. 1895. Graphite pencil on paper. 12 x 8 cm. Museu Picasso, Barcelona. Donation 1970.

OPP.95:148; MPB:111.190; PP.95:131





Croquis. Málaga [Barcelona]. 1895. Graphite pencil on paper. 12 x 8 cm. Museu Picasso, Barcelona. Donation 1970.

OPP.95:149; MPB:110.245r; PP.95:067

Croquis: le père de l'artiste dessinant. Málaga [Barcelona]. 1895. Graphite pencil on paper. 12 x 8 cm. Museu Picasso, Barcelona. Donation 1970.

OPP.95:150; MPB:111.188; PP.95:127





Croquis. Málaga [Barcelona]. 1895. Graphite pencil on paper. 12 x 8 cm. Museu Picasso, Barcelona. Donation 1970.

OPP.95:151; MPB:111.190r; PP.95:132

Croquis. Málaga [Barcelona]. 1895. Graphite pencil on paper. 12 x 8 cm. Museu Picasso, Barcelona. Donation 1970.

OPP.95:152; MPB:111.191; PP.95:133





Croquis. [Barcelona]. 1895. Graphite pencil on paper. 31 x 24,4 cm. Museu Picasso, Barcelona. Donation 1970.

OPP.95:153; MPB:110.360r

Croquis. Málaga [Barcelona]. 1895. Graphite pencil on paper. 12 x 8 cm. Museu Picasso, Barcelona. Donation 1970.

OPP.95:154; MPB:111.185; PP.95:121





Croquis. Málaga [Barcelona]. 1895. Conté pencil & graphite pencil on paper. 12 x 8 cm. Museu Picasso, Barcelona. Donation 1970.

OPP.95:155; MPB:111.184r; PP.95:120

Croquis. Málaga [Barcelona]. 1895. Conté pencil on paper. 12 x 8 cm. Museu Picasso, Barcelona. Donation 1970.

OPP.95:156; MPB:111.182r; PP.95:116





Croquis. Málaga [Barcelona]. 1895. Graphite pencil & conté pencil on paper. 12 x 8 cm. Museu Picasso, Barcelona. Donation 1970.

OPP.95:157; MPB:111.184; PP.95:119

Croquis. Málaga [Barcelona]. 1895. Graphite pencil on paper. 12 x 8 cm. Museu Picasso, Barcelona. Donation 1970.

OPP.95:158; MPB:111.183r; PP.95:118





Croquis. Málaga [Barcelona]. 1895. Graphite pencil & conté pencil on paper. 12 x 8 cm. Museu Picasso, Barcelona. Donation 1970.

OPP.95:159; MPB:111.194; PP.95:139

Croquis. Málaga [Barcelona]. 1895. Graphite pencil & conté pencil on paper. 12 x 8 cm. Museu Picasso, Barcelona. Donation 1970.

OPP.95:160; MPB:111.193r; PP.95:138



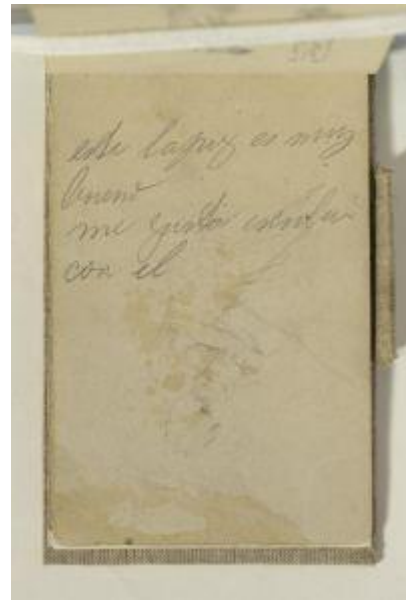


Croquis. Málaga [Barcelona]. 1895. Conté pencil on paper. 8 x 12 cm. Museu Picasso, Barcelona. Donation 1970.

OPP.95:161; MPB:111.192r; PP.95:136

Croquis. Málaga [Barcelona]. 1895. Graphite pencil on paper. 12 x 8 cm. Museu Picasso, Barcelona. Donation 1970.

OPP.95:162; MPB:111.192; PP.95:135





Croquis. Málaga [Barcelona]. 1895. Graphite pencil on paper. 12 x 8 cm. Museu Picasso, Barcelona. Donation 1970.

OPP.95:163; MPB:111.191r; PP.95:134

Croquis. Málaga [Barcelona]. 1895. Graphite pencil on paper. 12 x 8 cm. Museu Picasso, Barcelona. Donation 1970.

OPP.95:164; MPB:111.194r; PP.95:140





Croquis divers. Barcelona. 1895. Pen & ink on paper. 20,4 x 13,9 cm. Museu Picasso, Barcelona. Donation 1970.

OPP.95:165; C:437; MPB:110.608; PP.95:153

Croquis divers. Málaga [Barcelona]. 1895. Graphite pencil on paper. 12 x 8 cm. Museu Picasso, Barcelona. Donation 1970.

OPP.95:166; MPB:111.167r; PP.95:094





Croquis divers. Málaga [Barcelona]. 1895. Conté pencil on paper. 12 x 8 cm. Museu Picasso, Barcelona. Donation 1970.

OPP.95:167; MPB:112.483; PP.95:143

Croquis divers. Málaga [Barcelona]. 1895. Conté pencil & graphite pencil on paper. 12 x 8 cm. Museu Picasso, Barcelona. Donation 1970.

OPP.95:168; MPB:111.166; PP.95:093





Croquis divers. Barcelona. [1895]. Graphite pencil on bluish grey paper. 31,2 x 29,3 cm. Museu Picasso, Barcelona. Donation 1970.

OPP.95:169; MPB:110.858r; PP.95:055; TO.97*:26b

Croquis divers. Málaga [Barcelona]. 1895. Conté pencil on paper. 12 x 8 cm. Museu Picasso, Barcelona. Donation 1970.

OPP.95:170; MPB:111.177r; PP.95:108





Croquis divers. Málaga [Barcelona]. 1895. Graphite pencil & red pencil on paper. 12 x 8 cm. Museu Picasso, Barcelona. Donation 1970.

OPP.95:171; MPB:111.195r; PP.95:142

Croquis divers. Barcelona. 1895. Conté pencil & chalk on paper. 12 x 8 cm. Museu Picasso, Barcelona. Donation 1970.

OPP.95:172; MPB:112.484; PP.95:253





Femme au chapeau, de profil. Málaga [Barcelona]. 1895. Graphite pencil & conté pencil on paper. 12 x 8 cm. Museu Picasso, Barcelona. Donation 1970.

OPP.95:173; MPB:111.176; PP.95:105

Femme assise. Málaga [Barcelona]. 1895. Conté pencil & graphite on paper. 12,2 x 8,1 cm. Museu Picasso, Barcelona. Donation 1970.

OPP.95:175; MPB:111.164; PP.95:090





Femme de dos. A Coruña. 1895. Pen & watercolor on paper. 27,9 x 19,7 cm. Museu Picasso, Barcelona. Donation 1970.

OPP.95:176; C:412; MPB:110.375r; PP.95:151; TO.97*:7b

Femme de dos. [Barcelona]. 1895. Oil on wood. 15,5 x 10 cm. Museu Picasso, Barcelona. Donation 1970.

OPP.95:177; C:307; MPB:110.140; PP.95:145





Deux croquis. Málaga [Barcelona]. 1895. Graphite pencil on paper. 12 x 8 cm. Museu Picasso, Barcelona. Donation 1970.

OPP.95:178; MPB:111.189r; PP.95:130

Études. Barcelona. 1895. Conté pencil & graphite pencil on paper. 12 x 8 cm. Museu Picasso, Barcelona. Donation 1970.

OPP.95:179; MPB:111.166r; PP.95:092





Deux paons et un coq. A Coruña. 1895. Oil on wood. 9,5 x 15,5 cm. Museu Picasso, Barcelona. Donation 1970.

OPP.95:180; C:24; MPB:110.133; PP.95:026

El brindis et croquis divers. A Coruña. [1894~] 1895. Pen on paper. 19,6 x 20,5 cm. Museu Picasso, Barcelona. Donation 1970.

OPP.95:181; C:388; MPB:110.829r; PP.95:054; MG.15*:49; TO.97*:28b





Le père de l'artiste. Málaga [Barcelona]. 1895. Graphite pencil on paper. 12 x 8 cm. Museu Picasso, Barcelona. Donation 1970.

OPP.95:183; C:417; MPB:110.245; PP.95:069

Étude de bras et de main. Málaga [Barcelona]. 1895. Graphite pencil on paper. 8 x 12 cm. Museu Picasso, Barcelona. Donation 1970.

OPP.95:184; MPB:111.182; PP.95:115





Étude de bras et de main. Málaga [Barcelona]. 1895. Graphite pencil on paper. 12 x 8 cm. Museu Picasso, Barcelona. Donation 1970.

OPP.95:185; MPB:111.181; PP.95:113

Étude de bras et de main. Málaga [Barcelona]. 1895. Graphite pencil on paper. 8 x 12 cm. Museu Picasso, Barcelona. Donation 1970.

OPP.95:186; MPB:111.183; PP.95:117





Étude de figure. Málaga [Barcelona]. 1895. Graphite pencil on paper. 12 x 8 cm. Museu Picasso, Barcelona. Donation 1970.

OPP.95:187; C:486; MPB:110.600r; PP.95:088

Études. Málaga [Barcelona]. 1895. Graphite pencil & conté pencil on paper. 12 x 8 cm. Museu Picasso, Barcelona. Donation 1970.

OPP.95:188; MPB:111.187; PP.95:125





Exaltation allégorique du drapeau. A Coruña [Barcelona]. 1895. Sepia ink, pen & watercolor on laid paper. 25,2 x 15,5 cm. Museu Picasso, Barcelona. Donation 1970.

OPP.95:189; C:449; MPB:110.391; PP.95:062; HC.88:1.2; LM.07*:7; PA.20j*:9; RI.13*:207p; TK.02*:n/a; TO.97*:50a

Indigène polynésien. A Coruña [Barcelona]. 1895. Oil on tile. 39,5 x 39,5 x 4,4 cm. Museu Picasso, Barcelona. Donation 1970.

OPP.95:190; MPB:110.030; PP.95:001; MG.15*:92





Jeune femme. Málaga [Barcelona]. 1895. Graphite pencil on paper. 12 x 8 cm. Museu Picasso, Barcelona. Donation 1970.

OPP.95:191; MPB:111.177; PP.95:106

Nu féminin de dos. Málaga [Barcelona]. 1895. Conté pencil on paper. 12 x 8 cm. Museu Picasso, Barcelona. Donation 1970.

OPP.95:193; MPB:111.186; PP.95:123





Parodie d'un gentilhomme. A Coruña. 1895.
Pen on paper. 20,7 x 26,6 cm. Museu Picasso,
Barcelona. Donation 1970.

OPP.95:194; MPB:110.905; PP.95:058

Portrait de la mère de l'artiste. Málaga [Barcelona]. 1895.
Graphite pencil on paper. 12 x 8 cm. Museu Picasso,
Barcelona. Donation 1970.

OPP.95:195; MPB:111.179; PP.95:110





Portrait de la mère de l'artiste. Málaga [Barcelona]. 1895.
Graphite pencil & conté pencil on paper. 12 x 8 cm. Museu Picasso,
Barcelona. Donation 1970.

OPP.95:196; MPB:111.186r; PP.95:124

Portrait du père de l'artiste. Málaga [Barcelona]. 1895.
Graphite pencil on paper. 12 x 8 cm. Museu Picasso,
Barcelona. Donation 1970.

OPP.95:197; MPB:111.187r; PP.95:126





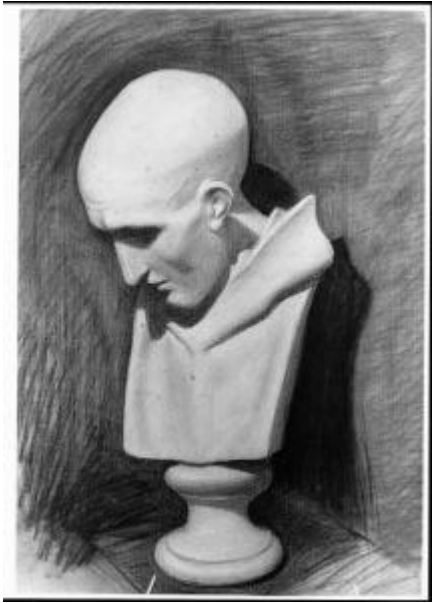
Portrait du père de l'artiste, lisant. Málaga [Barcelona]. 1895.
Graphite pencil & conté pencil on paper. 12 x 8 cm. Museu Picasso,
Barcelona. Donation 1970.

OPP.95:198; MPB:111.188r; PP.95:128

Tartana. A Coruña. 1895. Oil on paper.
12,8 x 19,1 cm. Museu Picasso, Barcelona.
Donation 1970.

OPP.95:200; MPB:110.110; PP.95:040;
MG.15*:91





Tête de Saint Bru. Barcelona. 1895. Charcoal on paper. 54 x 39 cm. Fundació Palau, Caldes d'Estrac. (Inv 0000186).

OPP.95:236

Manuel Pallarès au travail. Barcelona. 1895. Pen & ink on paper. 29,5 x 23,8 cm. Private collection, Barcelona.

OPP.95:237; PP.95:237; Z.XXI:25; AC.09:26p; JP.66:8





Modesto Castillo habillé comme un Maure. A Coruña. 1895. Oil on canvas. 44,5 x 27,1 cm. Christie's. #434, 5472, 06/21/12.

OPP.95:239; PP.95:021; JP.80:40p; JR.62*:1.1; JR.91:39p; MG.15:341; NS.01:277



Le général José de Palafox à cheval (d'après Goya). [Málaga] Madrid. 1895. Oil on cardboard. 11 x 15 cm. Balclis, Barcelona. #1203, 10/19/11.

OPP.95:240



Buste de femme de profil. Barcelona. 1895. Lead pencil on paper. 12 x 8,2 cm. Museu Picasso, Barcelona.

OPP.95:241; MPB:111.159; PP.95:243; JB.92:237p; WR.96:58p

'La alternativa'. A Coruña. [1895]. Oil on canvas. 79 x 151 cm. Private collection.

OPP.95:242





Homme à la pipe. Barcelona. [1895]. Pastel on paper [Reverse of *Portrait de la mère de l'artiste (María Picasso López)*]. 49,8 x 39 cm. Museu Picasso, Barcelona.

OPP.95:243; MPB:110.016r

Christophe Colomb dans le monastère de La Rábida. Málaga. 1895. Oil on canvas. 52,3 x 44,2 cm. Museu Picasso, Barcelona. Donation 1970.

OPP.95:245; C:28; MPB:110.937; PP.95:068; RI.13*:83p





Portrait de la mère de l'artiste. A Coruña. 1895. Lead pencil on paper. 12 x 8,2 cm. Museu Picasso, Barcelona. Donation 1970.

OPP.95:246; MPB:111.152; PP.95:232; MM.97:76p; NS.01:102

Le pigeonier. A Coruña. 1895. Oil on canvas. 9,9 x 15,4 cm. Museu Picasso, Barcelona.

OPP.95:247; C:25; MPB:110.131;
PP.95:025; JG.84*:7; MG.15:143p





Don José et études de femmes. Barcelona. 1895.
Pen on paper. 13 x 12,7 cm. Museu Picasso,
Barcelona.

OPP.95:248; C:433; MPB:110.427; PP.9596:038;
JG.84*:17

Jeune fille, lisant. Barcelona. 1895 [1896]. Watercolor [OïC].
19,5 x 12 cm. Marina Picasso Collection. Courtesy Galerie Jan
Krugier, Geneva.

OPP.95:249; PP.96:054; Z.VI:55; JG.84*:14





Couple. A Coruña. 1895. Pen & watercolor on paper [OïC]. 20 x 15,5 cm. Marina Picasso Collection. Courtesy Galerie Jan Krugier, Geneva.

OPP.95:252; PP.95:061; JR.91:42p

Femme debout. A Coruña. 1895. Pen & ink. 16 x 10,8 cm. Private collection.

OPP.95:257; PP.95:249; Z.VI:24





Femme assise. Barcelona. 1895. Graphite on gray paper. 31,4 x 18,2 cm. Private collection.

OPP.95:259; PP.95:089; Z.VI:26

Tête de femme de profil. Barcelona. 1895. Conté pencil on paper. 12,2 x 8,1 cm. Museu Picasso, Barcelona. Donation 1970.

OPP.95:264; MPB:112.486; PP.95:255





Deux personnages populaires. A Coruña. 1895.
Black ink & pen on paper. 12,8 x 19 cm. Museu
Picasso, Barcelona. Donation 1970.

OPP.95:265; C:393; MPB:110.109r; PP.95:003

Pleine lune. Barcelona. 1895. Oil on
wood. 10 x 15,4 cm. Museu Picasso,
Barcelona. Donation 1970.

OPP.95:266; MPB:110.172r; PP.95:146





La barge et autres croquis. A Coruña. 1895. Pen & ink & graphite on paper. 20 x 27,7 cm. Museu Picasso, Barcelona. Donation 1970.

OPP.95:269; C:387; MPB:110.374; PP.95:047

Esquisses. A Coruña. 1895. Pen & ink on paper. 27,7 x 20 cm. Museu Picasso, Barcelona. Donation 1970.

OPP.95:270; C:391; MPB:110.374r; PP.95:048





Croquis et caricatures. A Coruña. 1895. Pen & ink on paper. 26,2 x 20,9 cm. Museu Picasso, Barcelona. Donation 1970.

OPP.95:271; C:394; MPB:110.381; PP.99:375

Couple devant un chevalet. Barcelona. 1895. Pen & ink on paper. 26,2 x 20,9 cm. Museu Picasso, Barcelona. Donation 1970.

OPP.95:272; MPB:110.381r; PP.99:376





La femme de chambre Carmen Mendoza. Barcelona. 1895.
Graphite on paper. 12 x 8,2 cm. Museu Picasso, Barcelona.
Donation 1970.

OPP.95:273; C:413; MPB:110.432; PP.95:066

Étude du père de l'artiste et une femme. Barcelona.
1895. Graphite on paper. 22,5 x 16 cm. Museu Picasso,
Barcelona. Donation 1970.

OPP.95:274; C:416; MPB:110.630; PP.95:154





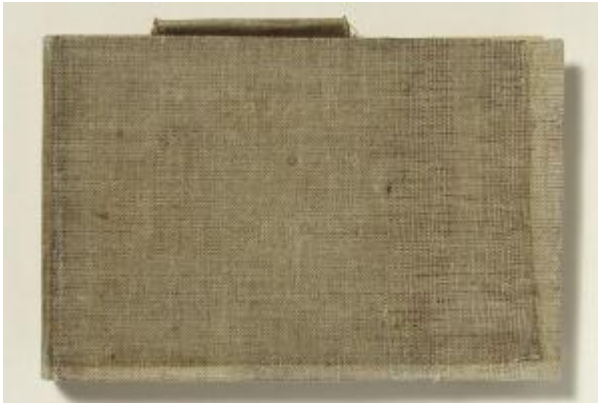
Étude académique: homme nu assis. A Coruña. 1895. Conté pencil on Ingres paper. 46,3 x 52 cm. Museu Picasso, Barcelona. Donation 1970.

OPP.95:275; MPB:110.895; PP.9597:024

Colombe. A Coruña. 1895. Graphite on paper. 13,2 x 10,4 cm. Museu Picasso, Barcelona. Donation 1970.

OPP.95:276; C:375; MPB:110.871r; PP.95:057





Carnet (Couverture). Málaga~Madrid. 1895. Mixed media. 13 x 8,5 x 1 cm. Museu Picasso, Barcelona. Donation 1970.

OPP.95:278; MPB:110.913c

Esquisses. Barcelona. 1895. Graphite on paper. 12,2 x 8,1 cm. Museu Picasso, Barcelona. Donation 1970.

OPP.95:279; MPB:111.120; PP.95:164





Homme assis. Barcelona. 1895. Graphite on paper. 12,2 x 8,1 cm. Museu Picasso, Barcelona. Donation 1970.

OPP.95:280; MPB:111.121; PP.95:165

Homme assis. Barcelona. 1895. Graphite on paper. 12,2 x 8,1 cm. Museu Picasso, Barcelona. Donation 1970.

OPP.95:281; MPB:111.121r; PP.95:166





Cheval de tir. Barcelona. 1895. Graphite on paper. 8,1 x 12,2 cm. Museu Picasso, Barcelona. Donation 1970.

OPP.95:282; MPB:111.122; PP.95:167

Études anatomiques. Barcelona. 1895. Graphite on paper. 12,2 x 8,1 cm. Museu Picasso, Barcelona. Donation 1970.

OPP.95:283; MPB:111.122r; PP.95:168





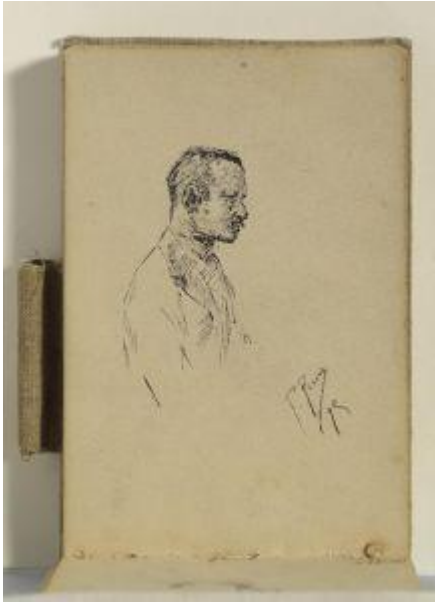
Enfant debout. Barcelona. 1895. Graphite on paper. 12,2 x 8,1 cm. Museu Picasso, Barcelona. Donation 1970.

OPP.95:284; MPB:111.123; PP.95:169

L'agneau et étude de tête. Barcelona. 1895. Graphite on paper. 12,2 x 8,1 cm. Museu Picasso, Barcelona. Donation 1970.

OPP.95:285; MPB:111.123r; PP.95:170





Buste d'homme. Barcelona. 1895. Pen & ink on paper. 12,2 x 8,1 cm. Museu Picasso, Barcelona. Donation 1970.

OPP.95:286; MPB:111.124; PP.95:171

Soldats. Barcelona. 1895. Graphite on paper. 12,2 x 8,1 cm. Museu Picasso, Barcelona. Donation 1970.

OPP.95:287; MPB:111.124r; PP.95:172





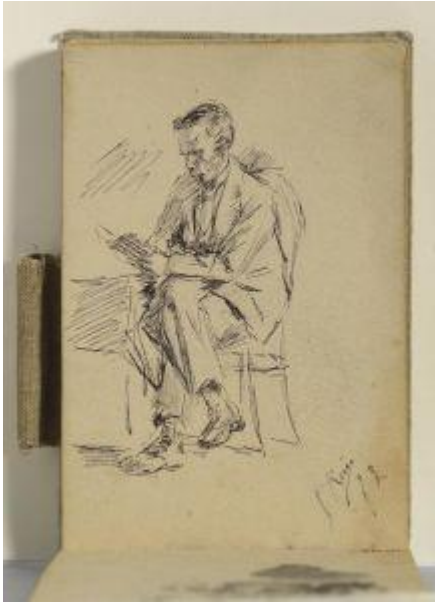
Études de lapin. Barcelona. 1895. Graphite on paper. 8,1 x 12,2 cm. Museu Picasso, Barcelona. Donation 1970.

OPP.95:288; MPB:111.125r; PP.95:174

Cheval de tir. Barcelona. 1895. Pen & India ink on paper. 8,1 x 12,2 cm. Museu Picasso, Barcelona. Donation 1970.

OPP.95:289; MPB:111.126; PP.95:175





Le père de l'artiste. Barcelona. 1895. Pen & ink on paper. 12,2 x 8,1 cm. Museu Picasso, Barcelona. Donation 1970.

OPP.95:290; MPB:111.127; PP.95:177

Paysan assis. Barcelona. 1895. Graphite on paper. 12,2 x 8,1 cm. Museu Picasso, Barcelona. Donation 1970.

OPP.95:291; MPB:111.128; PP.95:179





Homme urinant. Barcelona. 1895. Pen & ink on paper. 12,2 x 8,1 cm. Museu Picasso, Barcelona. Donation 1970.

OPP.95:292; MPB:111.129; PP.95:181

Étude des jambes d'un cheval. Barcelona. 1895. Graphite on paper. 12,2 x 8,1 cm. Museu Picasso, Barcelona. Donation 1970.

OPP.95:293; MPB:111.129r; PP.95:182





Étude des mains et des bottes. Barcelona. 1895. Graphite on paper. 12,2 x 8,1 cm. Museu Picasso, Barcelona. Donation 1970.

OPP.95:294; MPB:111.130; PP.95:183

Étude des pattes postérieures d'un cheval. Barcelona. 1895. Graphite on paper. 12,2 x 8,1 cm. Museu Picasso, Barcelona. Donation 1970.

OPP.95:295; MPB:111.130r; PP.95:184





La mère de l'artiste. Barcelona. 1895. Graphite & charcoal on paper. 12,2 x 8,1 cm. Museu Picasso, Barcelona. Donation 1970.

OPP.95:296; MPB:111.131; PP.95:185

Le père de l'artiste. Barcelona. 1895. Graphite & charcoal on paper. 12,2 x 8,1 cm. Museu Picasso, Barcelona. Donation 1970.

OPP.95:297; MPB:111.131r; PP.95:186





Étude d'homme. Barcelona. 1895. Graphite on paper. 12 x 8,2 cm. Museu Picasso, Barcelona. Donation 1970.

OPP.95:298; MPB:111.132; PP.95:187

Bateau. Barcelona. 1895. Graphite on paper. 8,1 x 12,2 cm. Museu Picasso, Barcelona. Donation 1970.

OPP.95:299; MPB:111.132r; PP.95:188





Croquis. Barcelona. 1895. Graphite & India ink on paper. 12,2 x 8,1 cm. Museu Picasso, Barcelona. Donation 1970.

OPP.95:300; MPB:111.133r; PP.95:190

La mère et la sœur de l'artiste, études des mains et tête du père de l'artiste. Barcelona. 1895. Pen & ink & graphite on paper. 12,2 x 8,1 cm. Museu Picasso, Barcelona. Donation 1970.

OPP.95:301; MPB:111.134; PP.95:191





Portail baroque. Barcelona. 1895. Graphite on paper. 12,2 x 8,1 cm. Museu Picasso, Barcelona. Donation 1970.

OPP.95:302; MPB:111.134r; PP.95:192

Portail baroque (Étude). Barcelona. 1895. Graphite on paper. 12,2 x 8,1 cm. Museu Picasso, Barcelona. Donation 1970.

OPP.95:303; MPB:111.135; PP.95:193





Buste de enfant et études de canne. Barcelona. 1895. Conté pencil on paper. 12,2 x 8,1 cm. Museu Picasso, Barcelona. Donation 1970.

OPP.95:304; MPB:111.135r; PP.95:194

Deux femmes. Barcelona. 1895. Graphite on paper. 12,2 x 8,1 cm. Museu Picasso, Barcelona. Donation 1970.

OPP.95:305; MPB:111.136r; PP.95:196





Enfant pèchant. Barcelona. 1895. Graphite on paper. 12,2 x 8,1 cm. Museu Picasso, Barcelona. Donation 1970.

OPP.95:306; MPB:111.137; PP.95:197

A la escuela: Lola, sœur de l'artiste (Étude).
Barcelona. 1895. Graphite & India ink on paper. 12,2 x 8,1 cm. Museu Picasso, Barcelona. Donation 1970.

OPP.95:307; MPB:111.137r; PP.95:198





Étude de scènes de rue. Barcelona. 1895. Graphite on paper.
12,2 x 8,1 cm. Museu Picasso, Barcelona. Donation 1970.

OPP.95:308; MPB:111.138; PP.95:201

Études géométriques. Barcelona. 1895. Graphite on
paper. 12,2 x 8,1 cm. Museu Picasso, Barcelona. Donation
1970.

OPP.95:309; MPB:111.138r; PP.95:202





Étude académique. Barcelona. 1895. Graphite on paper. 12,2 x 8,1 cm. Museu Picasso, Barcelona. Donation 1970.

OPP.95:310; MPB:111.139; PP.95:203

Étude académique. Barcelona. 1895. Graphite on paper. 12,2 x 8,1 cm. Museu Picasso, Barcelona. Donation 1970.

OPP.95:311; MPB:111.139r; PP.95:204





A la escuela: Lola, sœur de l'artiste (Étude). Barcelona. 1895. Graphite on paper. 12,2 x 8,1 cm. Museu Picasso, Barcelona. Donation 1970.

OPP.95:312; MPB:111.140; PP.95:205

Étude anatomique. Barcelona. 1895. Graphite on paper. 12,2 x 8,1 cm. Museu Picasso, Barcelona. Donation 1970.

OPP.95:313; MPB:111.140r; PP.95:206





Homme pèchant (Étude). Barcelona. 1895. Graphite on paper.
12,2 x 8,1 cm. Museu Picasso, Barcelona. Donation 1970.

OPP.95:314; MPB:111.141; PP.95:207

Garde civile à cheval. Barcelona. 1895.
Graphite on paper. 8,1 x 12,2 cm. Museu
Picasso, Barcelona. Donation 1970.

OPP.95:315; MPB:111.141r; PP.95:208



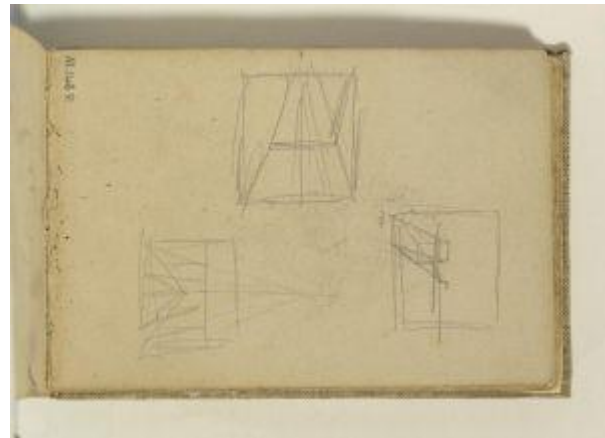


Homme assis et tête d'homme au barretina. Barcelona. 1895.
Graphite on paper. 12,2 x 8,1 cm. Museu Picasso, Barcelona.
Donation 1970.

OPP.95:316; MPB:111.142; PP.95:209

**Figures géométriques inscrites dans
trois rectangles.** Barcelona. 1895.
Graphite on paper. 8,1 x 12,2 cm. Museu
Picasso, Barcelona. Donation 1970.

OPP.95:317; MPB:111.142r; PP.95:210





La mère de l'artiste. Barcelona. 1895. Pen & ink & graphite on paper. 12,2 x 8,1 cm. Museu Picasso, Barcelona. Donation 1970.

OPP.95:318; MPB:111.143; PP.95:211

Tête de moine et têtes d'enfants. Barcelona. 1895. Graphite on paper. 12,2 x 8,1 cm. Museu Picasso, Barcelona. Donation 1970.

OPP.95:319; MPB:111.143r; PP.95:212





Soldat à cheval, galopant. Barcelona. 1895. Pen & ink & graphite on paper. 12,2 x 8,1 cm. Museu Picasso, Barcelona. Donation 1970.

OPP.95:320; MPB:111.144; PP.95:213

Canards. Barcelona. 1895. Graphite on paper. 12,2 x 8,1 cm. Museu Picasso, Barcelona. Donation 1970.

OPP.95:321; MPB:111.144r; PP.95:214





Jeune homme, de profil. Barcelona. 1895. Graphite on paper. 12,2 x 8,1 cm. Museu Picasso, Barcelona. Donation 1970.

OPP.95:322; MPB:111.145r; PP.95:215

Portail. Barcelona. 1895. Graphite on paper. 12,2 x 8,1 cm. Museu Picasso, Barcelona. Donation 1970.

OPP.95:323; MPB:111.146; PP.95:216





Étude académique. Barcelona. 1895. Graphite on paper. 12,2 x 8,1 cm. Museu Picasso, Barcelona. Donation 1970.

OPP.95:324; MPB:111.146r; PP.95:218

Esquisses. Barcelona. 1895. Graphite on paper. 12,2 x 8,1 cm. Museu Picasso, Barcelona. Donation 1970.

OPP.95:325; MPB:111.147; PP.95:219





Esquisses. Barcelona. 1895. Graphite on paper. 12,2 x 8,1 cm. Museu Picasso, Barcelona. Donation 1970.

OPP.95:326; MPB:111.147r; PP.95:220

Bustes d'hommes. Barcelona. 1895. Graphite on paper. 12,2 x 8,1 cm. Museu Picasso, Barcelona. Donation 1970.

OPP.95:327; MPB:111.148; PP.95:221





Tête de femme. Barcelona. 1895. Pen & ink & graphite on paper.
12,2 x 8,1 cm. Museu Picasso, Barcelona. Donation 1970.

OPP.95:328; MPB:111.148r; PP.95:222

Femme, de dos. Barcelona. 1895. Graphite on paper.
12,2 x 8,1 cm. Museu Picasso, Barcelona. Donation 1970.

OPP.95:329; MPB:111.149; PP.95:223





Étude de scène paysanne. Barcelona. 1895. Graphite on paper. 12,2 x 8,1 cm. Museu Picasso, Barcelona. Donation 1970.

OPP.95:330; MPB:111.149r; PP.95:224

Étude académique. Barcelona. 1895. Graphite on paper. 8,1 x 12,2 cm. Museu Picasso, Barcelona. Donation 1970.

OPP.95:331; MPB:111.150; PP.95:228





Étude de femmes. Barcelona. 1895. Graphite on paper. 12,2 x 8,1 cm. Museu Picasso, Barcelona. Donation 1970.

OPP.95:332; MPB:111.150r; PP.95:229

Étude académique. Barcelona. 1895. Graphite on paper. 12,2 x 8,1 cm. Museu Picasso, Barcelona. Donation 1970.

OPP.95:333; MPB:111.151; PP.95:230





La mère de l'artiste. Barcelona. 1895. Graphite on paper. 12,2 x 8,1 cm. Museu Picasso, Barcelona. Donation 1970.

OPP.95:334; MPB:111.151r; PP.95:231

La mère de l'artiste. Barcelona. 1895. Graphite on paper. 12,2 x 8,1 cm. Museu Picasso, Barcelona. Donation 1970.

OPP.95:335; MPB:111.153; PP.95:233





Croquis. Barcelona. 1895. Charcoal & graphite on paper. 12,2 x 8,1 cm. Museu Picasso, Barcelona. Donation 1970.

OPP.95:336; MPB:111.153r; PP.95:225

Buste de femme et caricatures. Barcelona. 1895. Charcoal & graphite on paper. 12,2 x 8,1 cm. Museu Picasso, Barcelona. Donation 1970.

OPP.95:337; MPB:111.154; PP.95:226



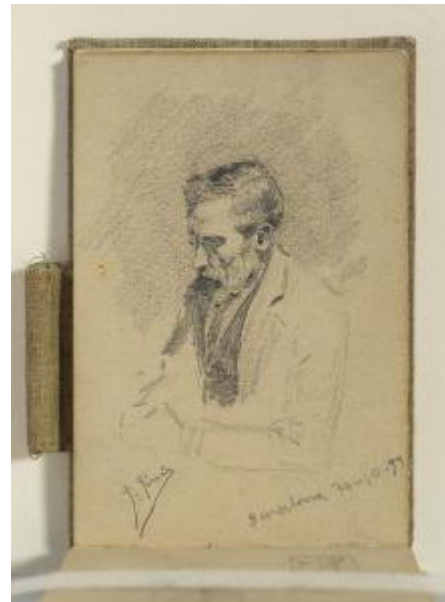


Études de perspective. Barcelona. 1895. Graphite on paper.
12,2 x 8,1 cm. Museu Picasso, Barcelona. Donation 1970.

OPP.95:338; MPB:111.154r; PP.95:227

Le père de l'artiste. Barcelona. 1895. Graphite on paper.
12,2 x 8,1 cm. Museu Picasso, Barcelona. Donation 1970.

OPP.95:339; MPB:111.155; PP.95:235





Portrait de femme. Barcelona. 1895. Graphite on paper. 12,2 x 8,1 cm. Museu Picasso, Barcelona. Donation 1970.

OPP.95:340; MPB:111.156r; PP.95:200

Torse du Christ et études des mains. Barcelona. 1895. Graphite on paper. 12,2 x 8,1 cm. Museu Picasso, Barcelona. Donation 1970.

OPP.95:341; MPB:111.157; PP.95:240





Buste d'homme et croquis divers. Barcelona. 1895. Graphite on paper. 12,2 x 8,1 cm. Museu Picasso, Barcelona. Donation 1970.

OPP.95:342; MPB:111.158; PP.95:241

Chien couché. Barcelona. 1895. Graphite on paper. 8,1 x 12,2 cm. Museu Picasso, Barcelona. Donation 1970.

OPP.95:343; MPB:111.158r; PP.95:242





Études d'homme et femmes. Barcelona. 1895.
Graphite on paper. 8,1 x 12,2 cm. Museu Picasso,
Barcelona. Donation 1970.

OPP.95:344; MPB:111.159r; PP.95:244

Le père de l'artiste. Barcelona. 1895. Graphite on paper.
12,2 x 8,1 cm. Museu Picasso, Barcelona. Donation 1970.

OPP.95:345; MPB:111.160; PP.95:245





Scènes de. Barcelona. 1895. Graphite & India ink on paper. 8,1 x 12,2 cm. Museu Picasso, Barcelona. Donation 1970.

OPP.95:346; MPB:111.160r; PP.95:246

Buste de femme au chignon et cheval. Barcelona. 1895. Graphite & India ink on paper. 12,2 x 8,1 cm. Museu Picasso, Barcelona. Donation 1970.

OPP.95:347; MPB:111.161; PP.95:247





Buste femme et chérubin. Barcelona. 1895. Pen & ink & graphite on paper. 12,2 x 8,1 cm. Museu Picasso, Barcelona. Donation 1970.

OPP.95:348; MPB:111.161r; PP.95:248

Le père de l'artiste et tête de femme. Barcelona. 1895. Graphite & India ink on paper. 12,2 x 8,1 cm. Museu Picasso, Barcelona. Donation 1970.

OPP.95:349; MPB:111.162; PP.95:250





Tête d'homme. Barcelona. 1895. Graphite on paper. 12,2 x 8,1 cm. Museu Picasso, Barcelona. Donation 1970.

OPP.95:350; MPB:111.163; PP.95:251

Tête d'homme et études. Barcelona. 1895. Graphite & Conté pencil on paper. 12,2 x 8,1 cm. Museu Picasso, Barcelona. Donation 1970.

OPP.95:351; MPB:111.163r; PP.95:252





Annotations. Barcelona [Málaga]. 1895. Conté pencil on paper. 12,2 x 8,1 cm. Museu Picasso, Barcelona. Donation 1970.

OPP.95:353; MPB:111.164r

Canards. Barcelona. 1895. Graphite on paper. 12,2 x 8,1 cm. Museu Picasso, Barcelona. Donation 1970.

OPP.95:355; MPB:112.485; PP.95:254





Carnet (Couverture). Barcelona. 1895. Mixed media. 8,3 x 12,8 x 1,2 cm. Museu Picasso, Barcelona. Donation 1970.

OPP.95:356; MPB:110.912c

Palette de l'artiste. Barcelona. 1895. Oil on wood. 15,5 x 10 cm. Museu Picasso, Barcelona. Donation 1970.

OPP.95:360; MPB:110.140r





Étude académique: composition allégorique.

A Coruña [~Barcelona]. [1894~] 1895. Charcoal & conté pencil on white laid paper with watermark. 44,2 x 63,5 cm. Museu Picasso, Barcelona. Donation 1970.

OPP.95:035; MPB:110.887; P.I:78; PP.95:260; JG.84*:11; MG.15*:30; NY.22h:41p; PJ.02*:21; TO.97*:16; WS.95a*:1

Portrait de la mère de l'artiste. Barcelona. 1895. Ink. S/U. Private collection.

OPP.95:258; PP.95:107; Z.VI:42





Danseuse, nu féminin et autres croquis. Barcelona. 1895~1896. Pen, ink & graphite pencil on paper. 37,8 x 22 cm. Museu Picasso, Barcelona. Donation 1970.

OPP.95:210; MPB:110.379; PP.9596:025; CK.10:35

Les adieux et autres croquis. Barcelona. 1895~1896. Brown ink & pen on watermarked paper. 19,7 x 14,6 cm. Museu Picasso, Barcelona. Donation 1970.

OPP.95:263; C:447; MPB:110.620; PP.9596:047; PA.19d*:1





La procession. Barcelona. 1895~1896. Pen & ink on paper. 22 x 22,3 cm. Museu Picasso, Barcelona. Donation 1970.

OPP.95:352; C:453; MPB:110.673r; PP.96:105

Étude académique d'après un plâtre de la Vénus de Milo. Barcelona. 1895~1896. Conté pencil on laid paper. 30,7 x 47,8 cm. Museu Picasso, Barcelona. Donation 1970.

OPP.95:362; MPB:110.856; PP.9596:031; LE.21*:227





Esquisses. Barcelona. 1895~1896. Pen & ink & ink stains on paper. 20,4 x 13,9 cm. Museu Picasso, Barcelona. Donation 1970.

OPP.95:372; MPB:110.608r; PP.9596:042

Esquisses. Barcelona. 1895~1896. Brown ink & pen on paper. 19,7 x 14,6 cm. Museu Picasso, Barcelona. Donation 1970.

OPP.95:373; C:440; MPB:110.620r; PP.9596:048





Esquisses. Barcelona. 1895~1896. Pen & ink on paper. 19,8 x 15,3 cm. Museu Picasso, Barcelona. Donation 1970.

OPP.95:375; C:451; MPB:110.622r; PP.9596:050

Étude académique. Barcelona. 1895~1896 [~1897]. Lead pencil on paper. 23,8 x 30,6 cm. Museu Picasso, Barcelona.

OPP.95:051; C:425; MPB:110.355; PP.9597:008; TO.94*:20





Étude académique: forêt. Barcelona. 1895~1896. Conté pencil on paper. [31,5] 31,4 x 24 cm. Museu Picasso, Barcelona. Donation 1970.

OPP.95:054; C:427; MPB:110.359; PP.9597:009; TO.94*:22

La montagne de Montserrat dans le jardin public Citadella. Barcelona. 1895~1896. Oil on panel. 10 x 15,5 cm. Museu Picasso, Barcelona. Donation 1970.

OPP.95:057; MPB:110.179; PP.9596:009; CR.07:65p; TO.94*:27





La montagne de Montserrat dans le jardin public Citadella. Barcelona. 1895~1896. Oil on panel. 10 x 15,6 cm. Museu Picasso, Barcelona. Donation 1970.

OPP.95:058; C:313; MPB:110.184; P.I:113;
PP.9596:007; CR.07:65p; CR.14:10; JR.91:78p;
TO.94*:28

La montagne de Montserrat dans le jardin public Citadella. Barcelona. 1895~1896. Oil on panel. 13 x 16,5 cm. Museu Picasso, Barcelona. Donation 1970.

OPP.95:059; C:312; MPB:110.198;
PP.9596:010; CR.07:65p; SL.04*:n/a;
TO.94*:29





Esquisse de paysage maritime. Barcelona. 1895~1896. Lead pencil on paper. 8,2 x 12 cm. Museu Picasso, Barcelona. Donation 1970.

OPP.95:061; MPB:111.136; PP.95:195; CR.07:31p; TO.94*:61

L'homme au mouton (d'après l'antique). A Coruña [Barcelona]. [1894~] 1895~1896. Charcoal & black pencil touches on paper. 63 x 47,5 cm. Museu Picasso, Barcelona. Donation 1970.

OPP.95:066; C:472; MPB:110.598; PP.9596:033; AB.08*:n/a; BL.91*:2; CK.04:73p; CP.95:130p; GP.96:46p; LU.93:331; MG.15*:32; PB.81*:2A.3; PJ.02*:51; PS.00:16p; TK.02*:n/a; TO.97*:13; UP.00:9; WS.11:16p; WW.91:43p





Portrait de la mère de l'artiste et autre croquis. Barcelona. 1895~1896. Pen, sepia ink & black ink on smooth white paper. 21,9 x 31,4 cm. Museu Picasso, Barcelona. Donation 1970.

OPP.95:117; C:428; MPB:110.322r;
PP.9596:021; TK.02*:n/a; TO.97*:35a

Bâton, toit et cheminée. Barcelona. 1895~1896. Graphite pencil on paper. 18 x 31 cm. Museu Picasso, Barcelona. Donation 1970.

OPP.95:137; MPB:110.828r; PP.9596:059





Esquisses. Barcelona. 1895~1896. Pen & ink wash on paper. 25,3 x 17,9 cm. Museu Picasso, Barcelona. Donation 1970.

OPP.95:139; MPB:110.383r; PP.9596:028

'Entre dos fuegos'. Barcelona. 1895~1896. Ink wash on smooth white paper [Obverse of '*Entre dos fuegos*' (*Étude*)]. 19 x 21,9 cm. Museu Picasso, Barcelona. Donation 1970.

OPP.95:201; C:402; MPB:110.376; PP.9596:023; TO.97*:41a





'Entre dos fuegos': autres croquis. [Barcelona]. 1895~1896. Pen, sepia ink & watercolor on paper [Obverse of *Croquis divers*]. [21,9] 21,4 x 31,4 cm. Museu Picasso, Barcelona. Donation 1970.

OPP.95:202; C:429; MPB:110.364; PP.9596:022; BA.09a*:n/a; GA.14:43p; JG.84*:15; TK.02*:n/a; TO.97*:39a

Étude académique: Laocoonte.

Barcelona. 1895~1896. Charcoal on laid, ivory pper. 47,7 x 61,8 cm. Museu Picasso, Barcelona. Donation 1970.

OPP.95:205; MPB:110.876r; PP.9596:061; TO.97*:17b





Étude académique: homme nu. Barcelona. 1895~1896. Black pencil on bluish grey laid paper. 43,5 x 47,4 cm. Museu Picasso, Barcelona. Donation 1970.

OPP.95:208; MPB:110.881; PP.95:158;
JG.84*:12; JR.91:60p; MM.97:74p; NS.01:98;
TK.02*:n/a; TO.97*:22

Tête d'homme. Barcelona. 1895~1896. Oil on wood. 15,5 x 9,4 cm. Museu Picasso, Barcelona. Donation 1970.

OPP.95:212; C:304; MPB:110.123; PP.9596:012





Tête de cheval. Barcelona. 1895~1896. Oil on wood. 10 x 15,6 cm. Museu Picasso, Barcelona. Donation 1970.

OPP.95:213; MPB:110.145; PP.9596:005

Tête d'homme, de profil. Barcelona. 1895~1896. Graphite pencil, conté pencil, pen & sepia ink on paper. 14,2 x 20,3 cm. Museu Picasso, Barcelona. Donation 1970.

OPP.95:214; C:415; MPB:110.607; PP.9596:041





Têtes et nus féminins. Barcelona. 1895~1896. Pen & graphite pencil on paper. 37,8 x 22 cm. Museu Picasso, Barcelona. Donation 1970.

OPP.95:215; MPB:110.379r; PP.9596:026

Croquis. Barcelona. 1895~1896. Pen & sepia ink on yellowish paper. 20,5 x 13,3 cm. Museu Picasso, Barcelona. Donation 1970.

OPP.95:217; C:436; MPB:110.614; PP.9596:043;
TK.02*:n/a; TO.97*:29a





'Entre dos fuegos' (Étude). Barcelona. 1895~1896. Pen on white paper [Reverse of '*Entre dos fuegos*']. 19 x 21,9 cm. Museu Picasso, Barcelona. Donation 1970.

OPP.95:218; C:401; MPB:110.376r; PP.9596:024; TO.97*:41b

Croquis de la mère de l'artiste et d'autres. Barcelona. 1895~1896. Pen & sepia ink on yellowish paper. 20,5 x 13,3 cm. Museu Picasso, Barcelona. Donation 1970.

OPP.95:219; C:438; MPB:110.614r; PP.9596:044; TO.97*:29b





Croquis divers. Barcelona. 1895~1896. Pen & ink on smooth white paper. 21,9 x 31,4 cm. Museu Picasso, Barcelona. Donation 1970.

OPP.95:221; C:445; MPB:110.322; PP.9596:020; TO.97*:35b

Croquis divers. Barcelona. 1895~1896. Pen & black ink on paper. 16 x 21 cm. Museu Picasso, Barcelona. Donation 1970.

OPP.95:222; MPB:110.308r; PP.9596:019; TO.97*:48b





Croquis divers de mains. Barcelona. 1895~1896. Pen & sepia ink on yellowish paper. 20,5 x 13,1 cm. Museu Picasso, Barcelona. Donation 1970.

OPP.95:223; C:54; MPB:110.615r; PP.9596:046; TO.97*:30b

Femme assise au chapeau, de dos. Barcelona. 1895~1896. Oil on wood. 15,4 x 8,2 cm. Museu Picasso, Barcelona. Donation 1970.

OPP.95:224; C:303; MPB:110.189; PP.9596:011





Esquisses. Barcelona. 1895~1896. Graphite pencil on paper. 19,1 x 13 cm. Museu Picasso, Barcelona. Donation 1970.

OPP.95:225; MPB:110.111r; PP.96:348

Scène de bataille. Barcelona. 1895~1896. Pen, sepia wash, graphite pencil & albaialde on paper [Obverse of *Croquis à l'envers*]. [31 x 47,5] 30,9 x 47,4 cm. Museu Picasso, Barcelona. Donation 1970.

OPP.95:226; C:458; MPB:110.697; PP.9596:054; HC.88:1.4; NS.01:280; PA.19d*:6; TK.02*:n/a; TO.97*:59a





Scène orientale. Barcelona. 1895~1896. Watercolor on paper. 25,3 x 17,8 cm. Museu Picasso, Barcelona. Donation 1970.

OPP.95:227; C:456; MPB:110.236; PP.9596:018; NS.01:179; TK.02*:n/a; TO.97*:54

Études et croquis de scène religieuse. Barcelona. 1895~1896. Conté pencil & chalk touches on dark, grey paper. 65 x 50,1 cm. Museu Picasso, Barcelona. Donation 1970.

OPP.95:228; C:462; MPB:110.700; PP.9596:056; TO.97*:43a





La Bataille de Covadonga. Barcelona. 1895~1896. Pen & sepia ink on white paper. 17,9 x 22,4 cm. Museu Picasso, Barcelona. Donation 1970.

OPP.95:229; C:457; MPB:110.639; PP.9596:052; CK.10*:24; NS.01:278; PA.19d*:4; TK.02*:n/a; TO.97*:42

La procession. Barcelona. 1895~1896. Pen & ink on white paper. 20,4 x 23,9 cm. Museu Picasso, Barcelona. Donation 1970.

OPP.95:230; C:454; MPB:110.646; PP.9596:053; TK.02*:n/a; TO.97*:45





Iris. Barcelona. 1895~1896. Oil on wood. 15,6 x 10 cm. Museu Picasso, Barcelona. Donation 1970.

OPP.95:231; C:325; MPB:110.132; PP.9596:003

Loa assise à la corbeille. Barcelona. 1895~1896. Graphite pencil on paper. 31 x 18 cm. Museu Picasso, Barcelona. Donation 1970.

OPP.95:232; C:411; MPB:110.828; PP.9596:058





Nature morte avec pommes et croquis de têtes féminines.

Barcelona. 1895~1896. Pen on paper. 20,9 x 13,5 cm. Museu Picasso, Barcelona. Donation 1970.

OPP.95:233; C:430; MPB:110.405; PP.9596:037

Paysage. Barcelona. 1895~1896. Oil on paper. 12,7 x 17,9 cm. Museu Picasso, Barcelona. Donation 1970.

OPP.95:234; C:323; MPB:110.113; PP.9596:002





Étude académique: Homme nu, vu de dos. Barcelona. 1895~1896. Oil on canvas. 65 x 46 cm. Private collection, Córdoba.

OPP.95:235; JG.84*:210; JP.96:28p

Arlequin et deux masques. Barcelona. 1895~1896. Wash on laid, ivory paper [Reverse of OPP.95:030]. 21 x 47,8 cm. Museu Picasso, Barcelona. Donation 1970.

OPP.95:253; MPB:110.235r;
PP.9596:017; DO.07*:12; TO.97*:38b





Scène d'intérieur. Barcelona. 1895~1896. Pen & ink on paper. 12,8 x 13,2 cm. Museu Picasso, Barcelona. Donation 1970.

OPP.95:262; MPB:110.428; PP.9596:040;
BA.18*:57p

Tête de jeune homme au barretina. Barcelona. 1895~1896.
Oil on wood. 21,9 x 13,1 cm. Museu Picasso, Barcelona.
Donation 1970.

OPP.95:267; C:306; MPB:110.215; PP.9596:013





Palette de l'artiste. Barcelona. 1895~1896. Oil on wood. 21,9 x 13,1 cm. Museu Picasso, Barcelona. Donation 1970.

OPP.95:268; MPB:110.215r

Étude académique. Barcelona. 1895~1896. Conté pencil on paper. 59 x 35,5 cm. Museu Picasso, Barcelona. Donation 1970.

OPP.95:277; MPB:110.891; PP.9596:065





Étude académique: nu masculin. Barcelona. 1895~1896. Charcoal & Conté pencil on watermarked laid paper. 62 x 40,5 cm. Museu Picasso, Barcelona. Donation 1970.

OPP.95:357; MPB:110.884; PP.9596:062

Paysage. Barcelona. 1895~1896. Oil on wood. 14 x 10 cm. Museu Picasso, Barcelona. Donation 1970.

OPP.95:358; MPB:110.135r





Croquis. Barcelona. 1895~1896. Graphite on wood. 10 x 15,6 cm. Museu Picasso, Barcelona. Donation 1970.

OPP.95:359; MPB:110.184r; PP.9596:008

Étude académique. Barcelona. 1895~1896. Conté pencil on paper. 59 x 35,5 cm. Museu Picasso, Barcelona. Donation 1970.

OPP.95:363; MPB:110.891r; PP.9596:066





Nu masculin. Barcelona. 1895~1896. Conté pencil & pastel on paper. 25,3 x 17,9 cm. Museu Picasso, Barcelona. Donation 1970.

OPP.95:364; MPB:110.383; PP.9596:027

Étude académique d'après un plâtre de la Vénus de Milo. Barcelona. 1895~1896. Graphite on grey laid paper. 24 x 16 cm. Museu Picasso, Barcelona. Donation 1970.

OPP.95:366; C:467; MPB:110.392; PP.9596:029;
LE.21*:226





Étude académique: homme nu. Barcelona. 1895~1896. Graphite on paper. 16 x 15,6 cm. Museu Picasso, Barcelona. Donation 1970.

OPP.95:367; MPB:110.400; PP.9596:034

Étude académique: buste d'homme romain. Barcelona. 1895~1896. Graphite on paper. 15,8 x 15,5 cm. Museu Picasso, Barcelona. Donation 1970.

OPP.95:369; MPB:110.401; PP.9596:036





Tête d'homme et portail. Barcelona.
1895~1896. Watercolor & Conte pencil on paper.
13 x 12,2 cm. Museu Picasso, Barcelona. Donation
1970.

OPP.95:370; MPB:110.427r; PP.9596:039

Bal populaire. Barcelona. 1895~1896.
Wash on paper. 41,5 x 51 cm. Museu
Picasso, Barcelona. Donation 1970.

OPP.95:371; C:466; MPB:110.896;
PP.9596:067; PA.20j*:11





Tête d'homme et autres croquis. Barcelona. 1895~1896.
Pen & ink & watercolor on paper. 19,8 x 15,3 cm. Museu
Picasso, Barcelona. Donation 1970.

OPP.95:374; C:441; MPB:110.622; PP.9596:049

Étude. Madrid. 1895~1897. Conté crayon.
48 x 31,5 cm. Private collection.

OPP.95:260; PP.9597:014; Z.VI:126





Modèle de l'École des Beaux-Arts. Barcelona. 1895~1897. Conté crayon & graphite. 47,7 x 31,4 cm. Private collection.

OPP.95:261; PP.9597:002; Z.VI:129

Étude académique. Barcelona. 1895~1897. Conté pencil on paper. 48 x 31,5 cm. Museu Picasso, Barcelona. Donation 1970.

OPP.95:354; MPB:110.596; PP.9597:012; GI.95*:n/a





Étude académique. Barcelona. 1895~1897. Charcoal on paper. 47,8 x 31 cm. Museu Picasso, Barcelona. Donation 1970.

OPP.95:365; MPB:110.850r; PP.9597:016

Étude académique: boxeur. Barcelona. 1895~1897. Conté crayon on paper. 53,5 x 33,7 cm. Museu Picasso, Barcelona. Gift of Pablo Picasso, 1970.

OPP.95:378; MPB:110.893





Étude académique: homme nu, de profil. Barcelona. 1895~1897.
Oil on canvas. 78,5 x 49 cm. Museu Picasso, Barcelona. Donation
1970.

OPP.95:070; MPB:110.048; PP.9597:003; TO.97:55p

Étude académique: homme nu assis. Barcelona.
1895~1897. Charcoal & conté pencil on laid, ivory paper.
59,5 x 41,8 cm. Museu Picasso, Barcelona. Donation 1970.

OPP.95:192; MPB:110.882r; PP.9597:021; TO.97*:21b





Étude académique: squelette. Barcelona. 1895~1897.
Pencil, pen & sepia wash on white paper. 63 x 50,1 cm.
Museu Picasso, Barcelona. Donation 1970.

OPP.95:203; MPB:110.551; PP.9597:010; TK.02*:n/a;
TO.97*:25

Étude académique: garçon debout. Barcelona. 1895~1897.
Conte pencil & charcoal on paper. 60,7 x 35,5 [35] cm. Museu
Picasso, Barcelona. Donation 1970.

OPP.95:216; MPB:110.888; P.I:136; PP.96:098; TO.95a*:n/a;
WS.94:8p





Étude académique: torse d'homme, de trois-quarts. Barcelona. 1895~1897. Oil on canvas. 35 x 39,5 cm. Museu Picasso, Barcelona. Donation 1970.

OPP.95:220; MPB:110.057; PP.9597:006

Soley, modèle de l'Ecole des Beaux-Arts de la Llotja à Barcelona. Barcelona. 1895~1897. Conté pencil on paper. 47,5 x 19,5 cm. Private collection.

OPP.95:250; PP.9697:002; Z.VI:127; TO.97:53p





Caricatures de Soley et autres modèles.

Barcelona. 1895~1897. Pen & ink on paper. 13,2 x 20,9 cm. Museu Picasso, Barcelona. Donation 1970.

OPP.95:251; MPB:110.287r; PP.00:132;
PP.9597:025; TO.97:53p

Caricature; gribouillis. Barcelona. 1895~1897.
Graphite on paper. 62,5 x 50,2 cm. Museu Picasso,
Barcelona. Donation 1970.

OPP.95:361; MPB:110.551r; PP.9597:011





Étude académique. Barcelona. 1895~1897. Charcoal on watermarked laid paper. 47,8 x 31 cm. Museu Picasso, Barcelona. Donation 1970.

OPP.95:368; C:478; MPB:110.850; PP.9597:015

Étude académique: boxeur. Barcelona. 1895~1897. Conté crayon on paper. 53,5 x 33,7 cm. Museu Picasso, Barcelona. Donation 1970.

OPP.95:376; MPB:110.893r; PP.9597:022





Étude académique: nu masculin debout. Barcelona. 1895~1897. Charcoal & conté crayon. 62 x 38,7 cm. Museu Picasso, Barcelona. Donation 1970.

OPP.95:377; C:484; MPB:110.879; PP.9597:019

Nu de face. Barcelona. 1895~1897. Oil on canvas [Obverse of *Nu de dos*]. 68,5 x 40,5 cm. Invaluable, Paris. #49, D620384179, 05/28/10.

OPP.95:379





Nu de dos. Barcelona. 1895~1897. Oil on canvas [Reverse of *Nu de face*]. 68,5 x 40,5 cm. invaluable.com. #49, D620384179, 05/28/10.

OPP.95:380

Cinq gitanes. [Barcelona]. 1895~1900. Oil on cardboard. 8,6 X 7,1 cm. Galerie de la Présidence, Paris. 2009.

OPP.95:118

